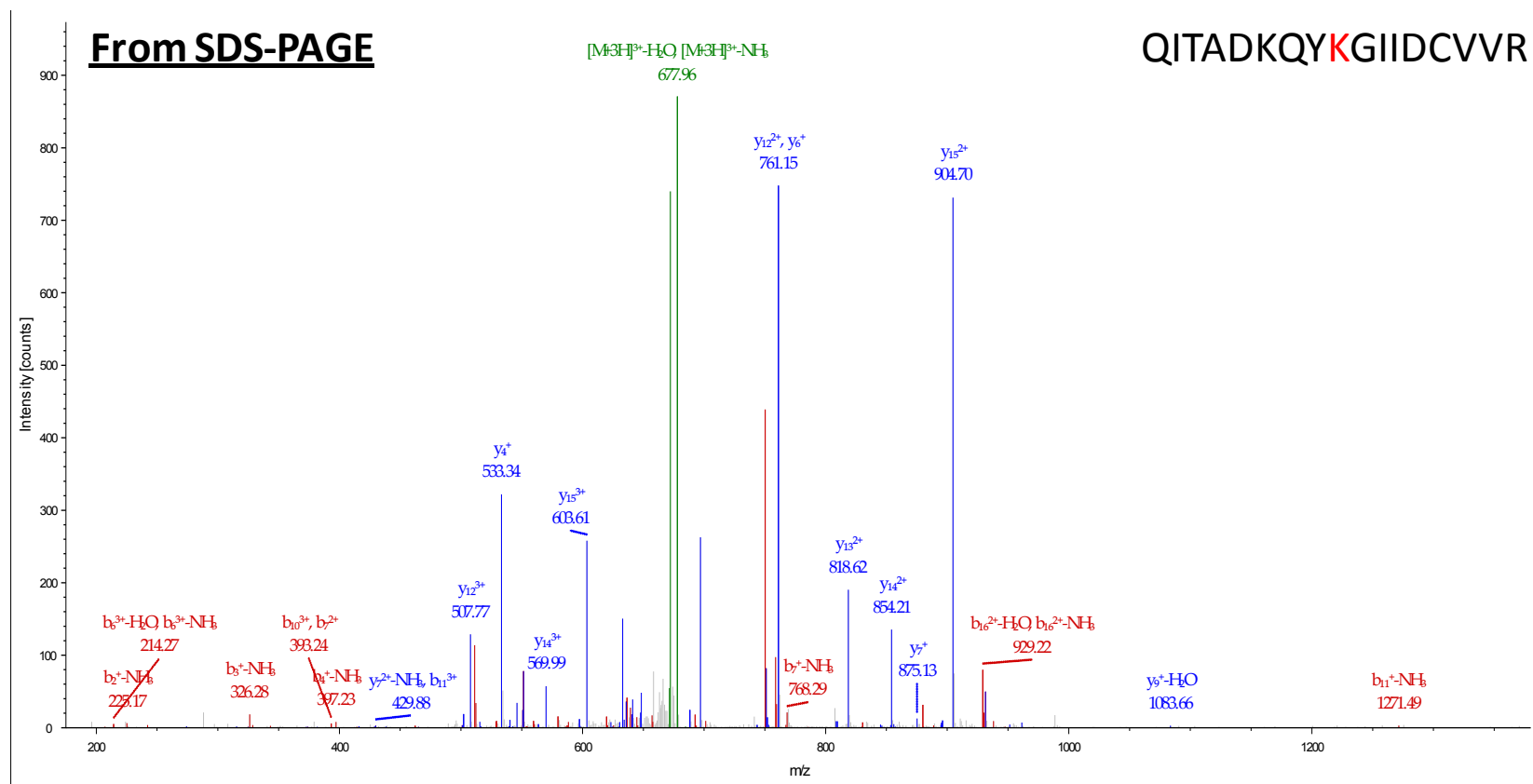


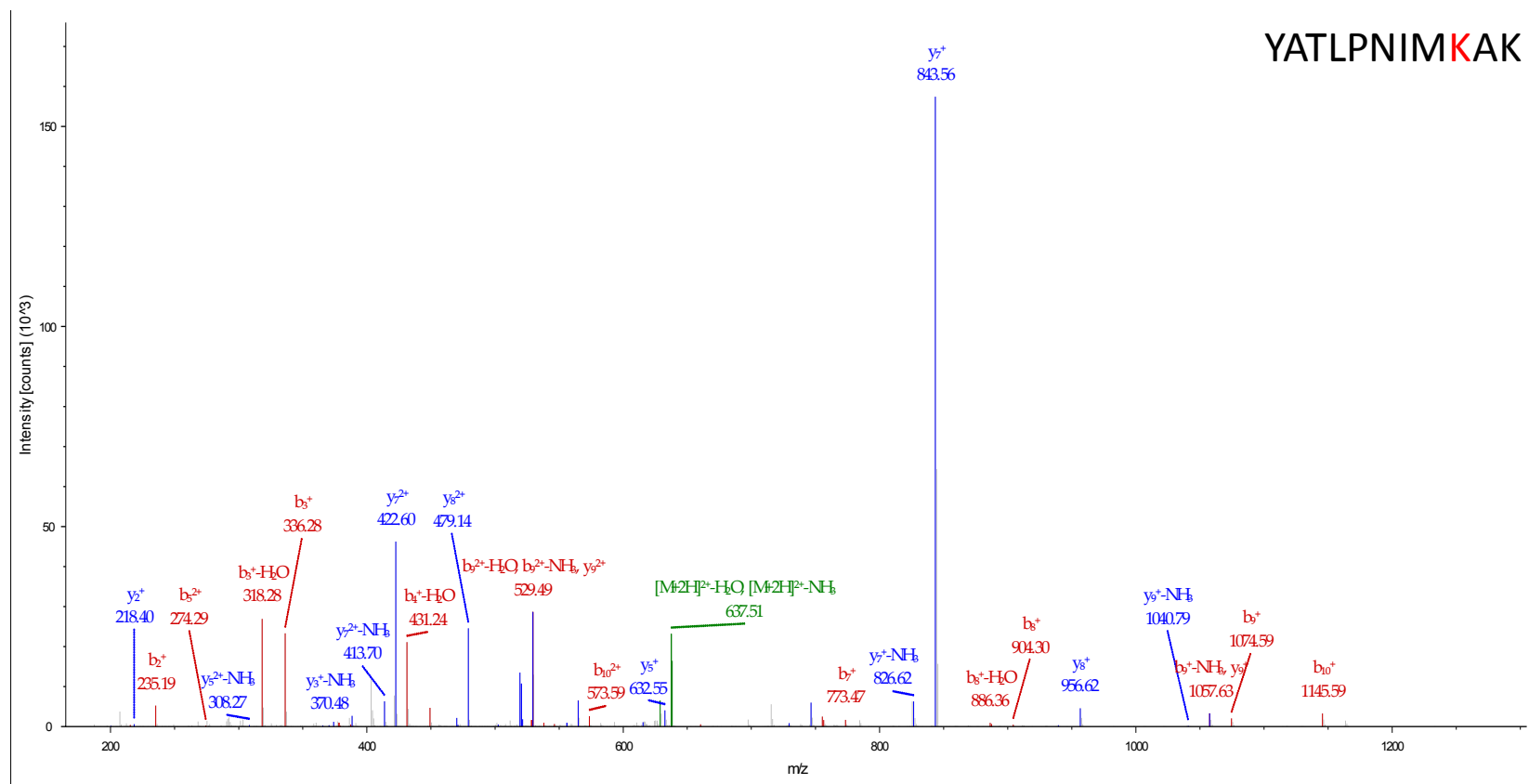
Supplementary Information

Figure S1. Mass Spectrometry (MS/MS) spectra for acetylated peptides. SDS-PAGE, sodium dodecyl sulfate-polyacrylamide gel electrophoresis; IEF, isoelectric focusing; PLRP, polymeric reversed-phase liquid chromatography at high pH. (1–28) From SDS-PAGE; (29–36) From IEF; (37–39) From PLRP.



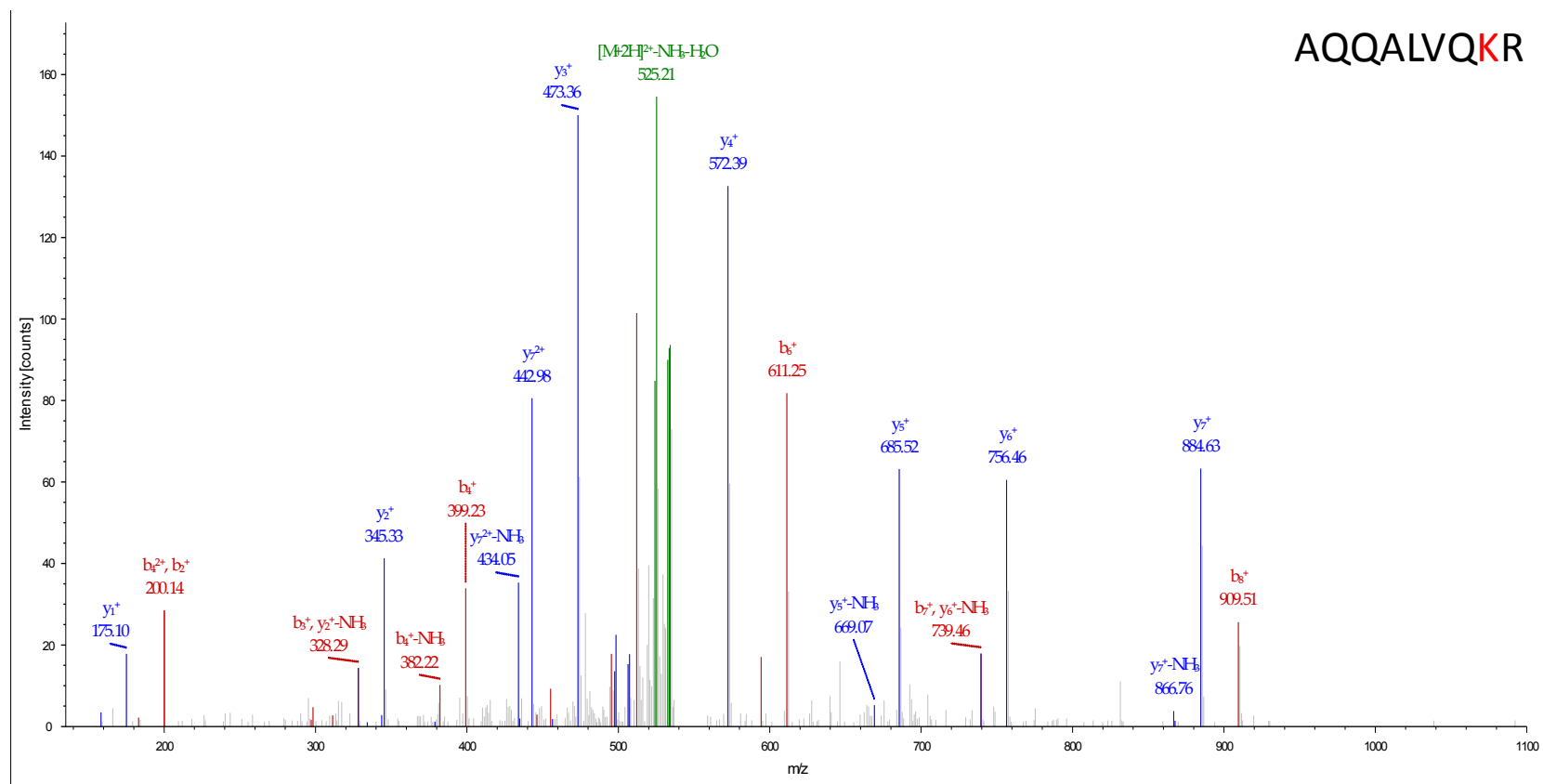
(1)

Figure S1. Cont.



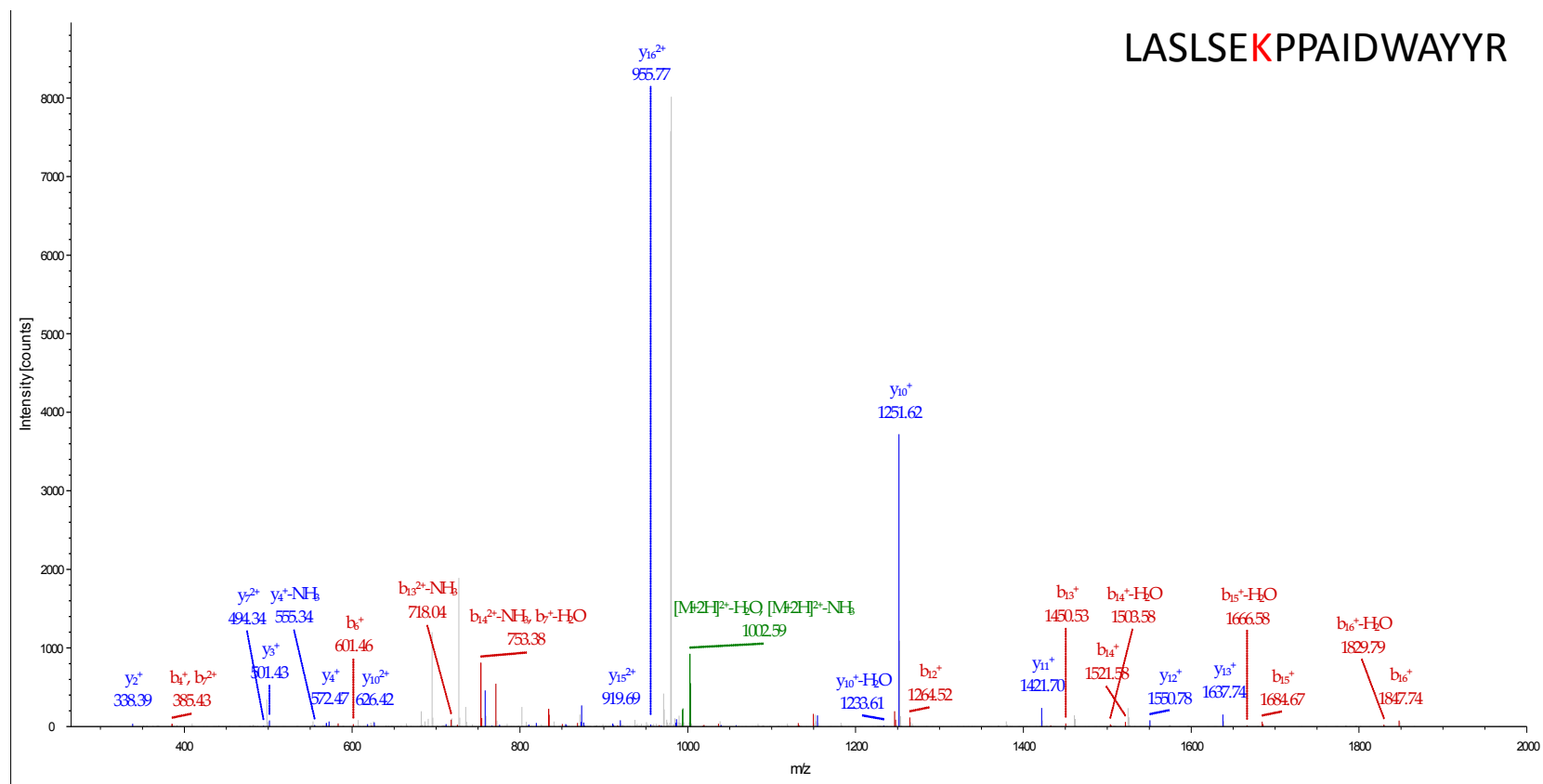
(2)

Figure S1. Cont.



(3)

Figure S1. Cont.



(4)

Figure S1. Cont.

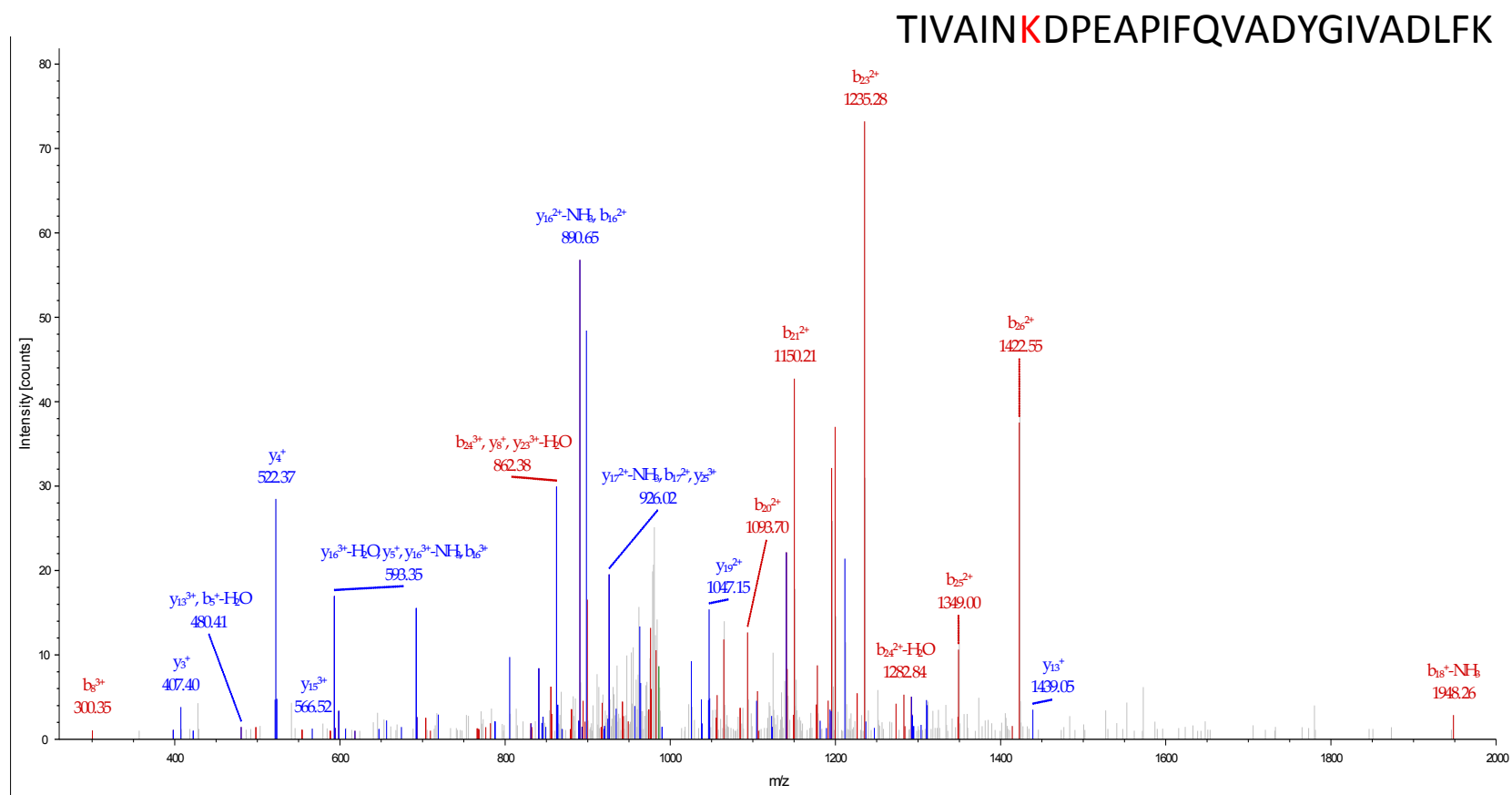
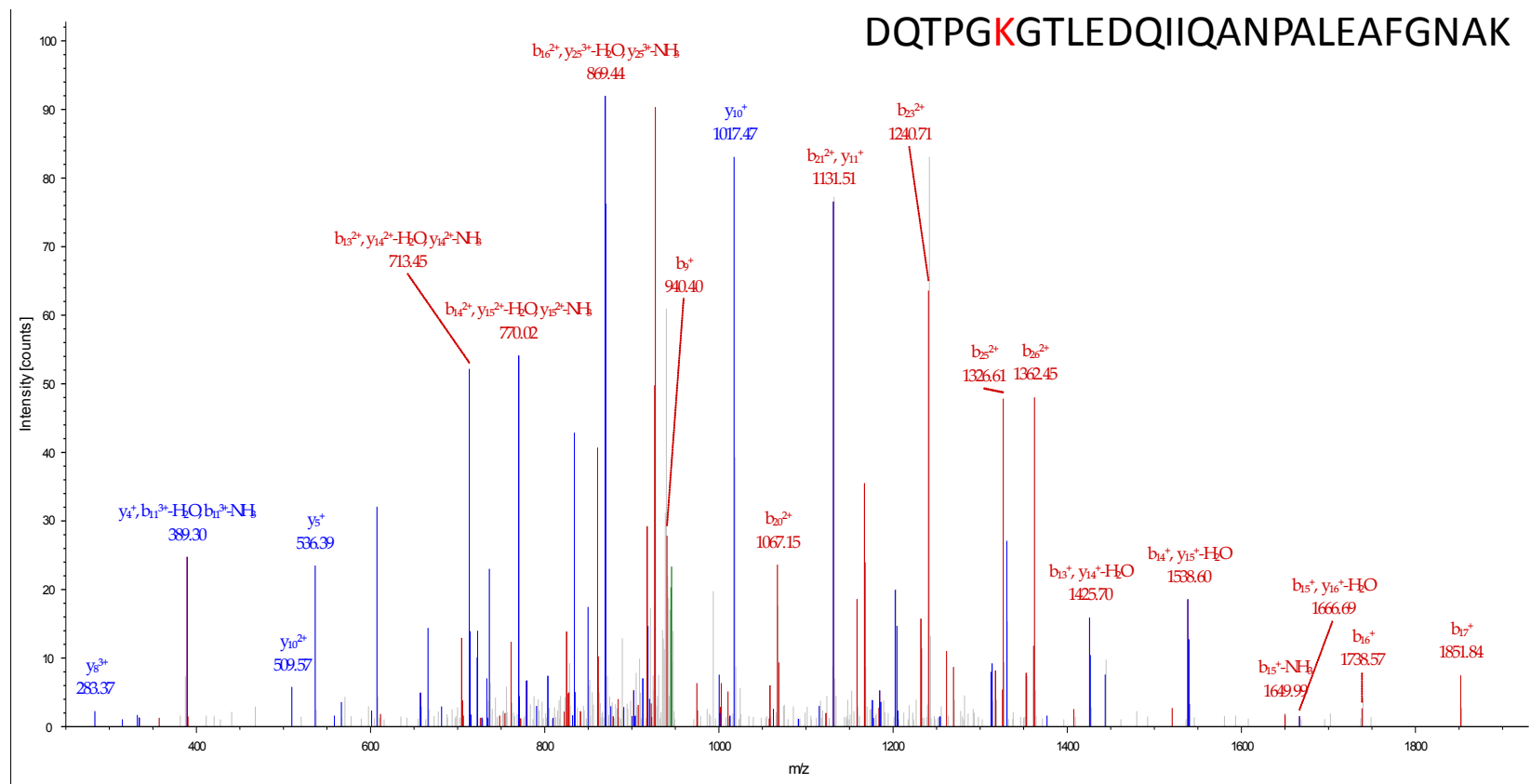
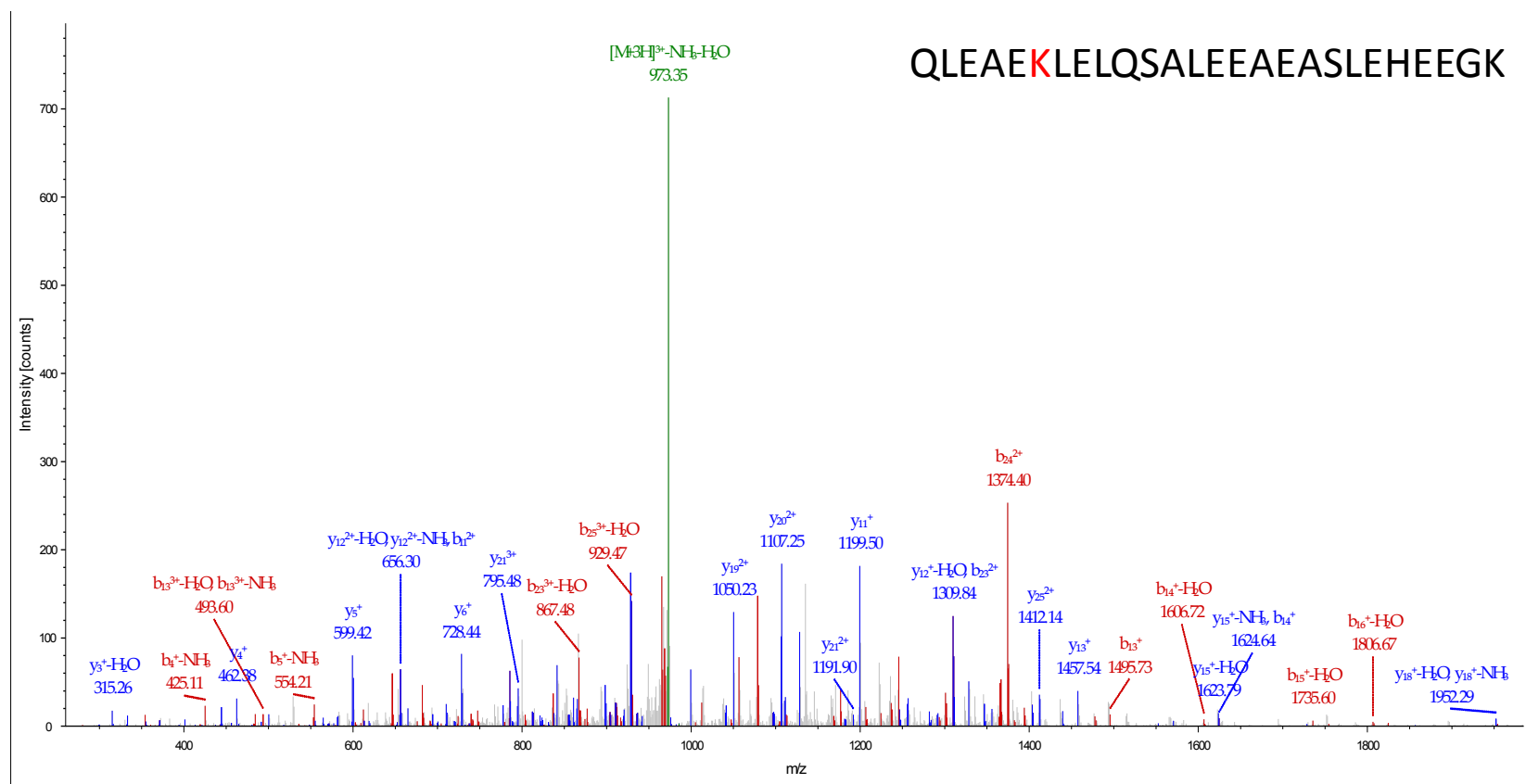


Figure S1. Cont.



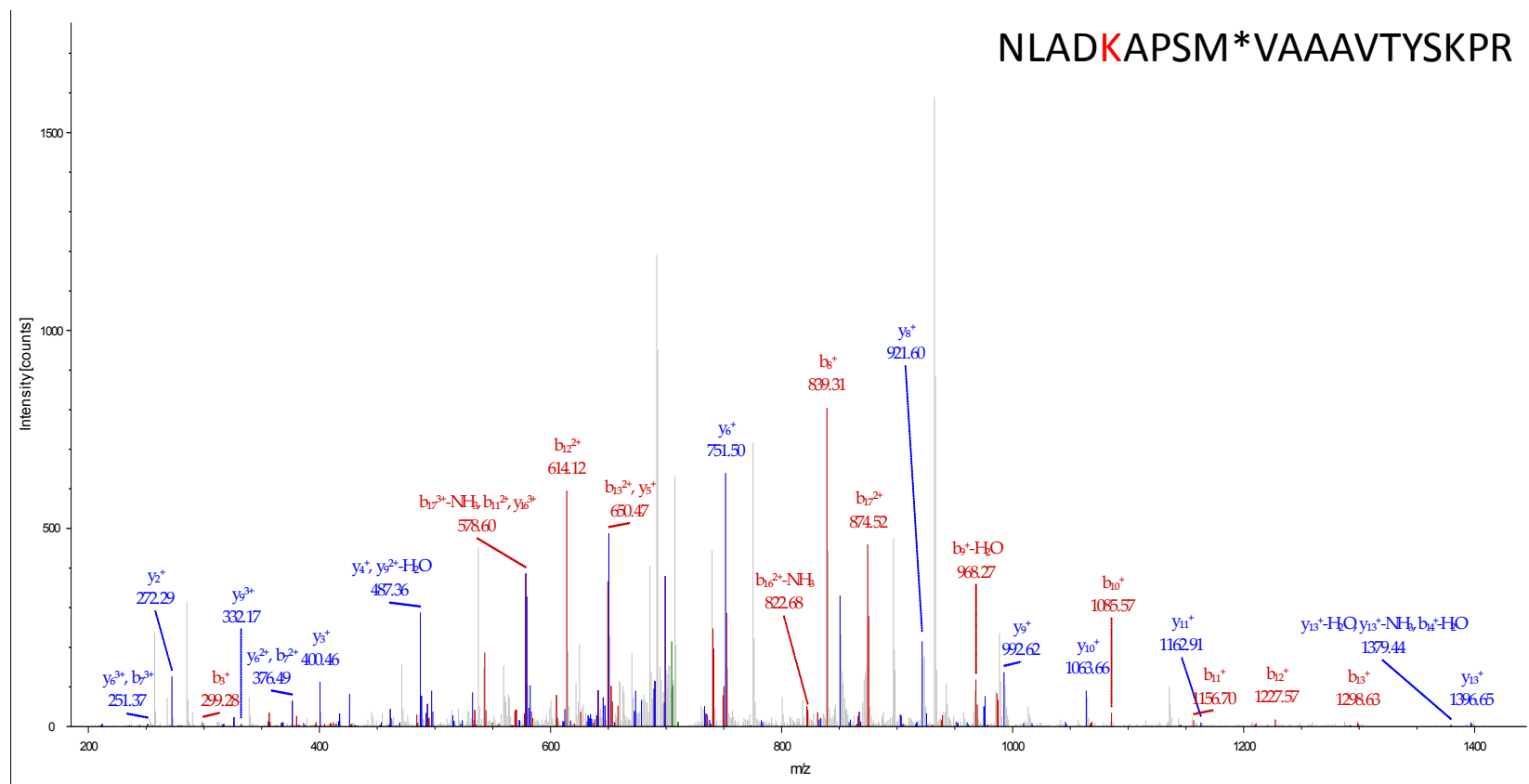
(6)

Figure S1. Cont.



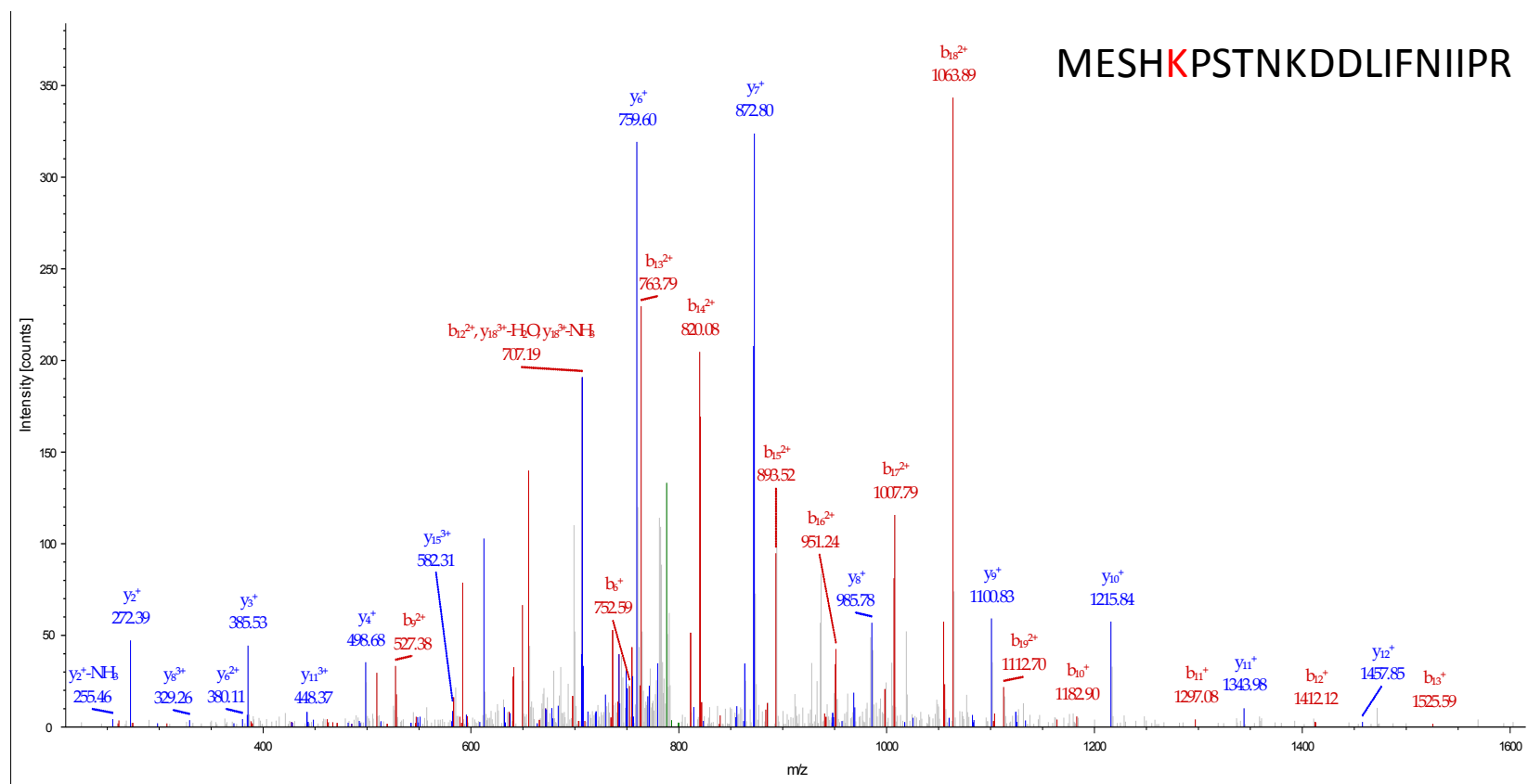
(7)

Figure S1. Cont.



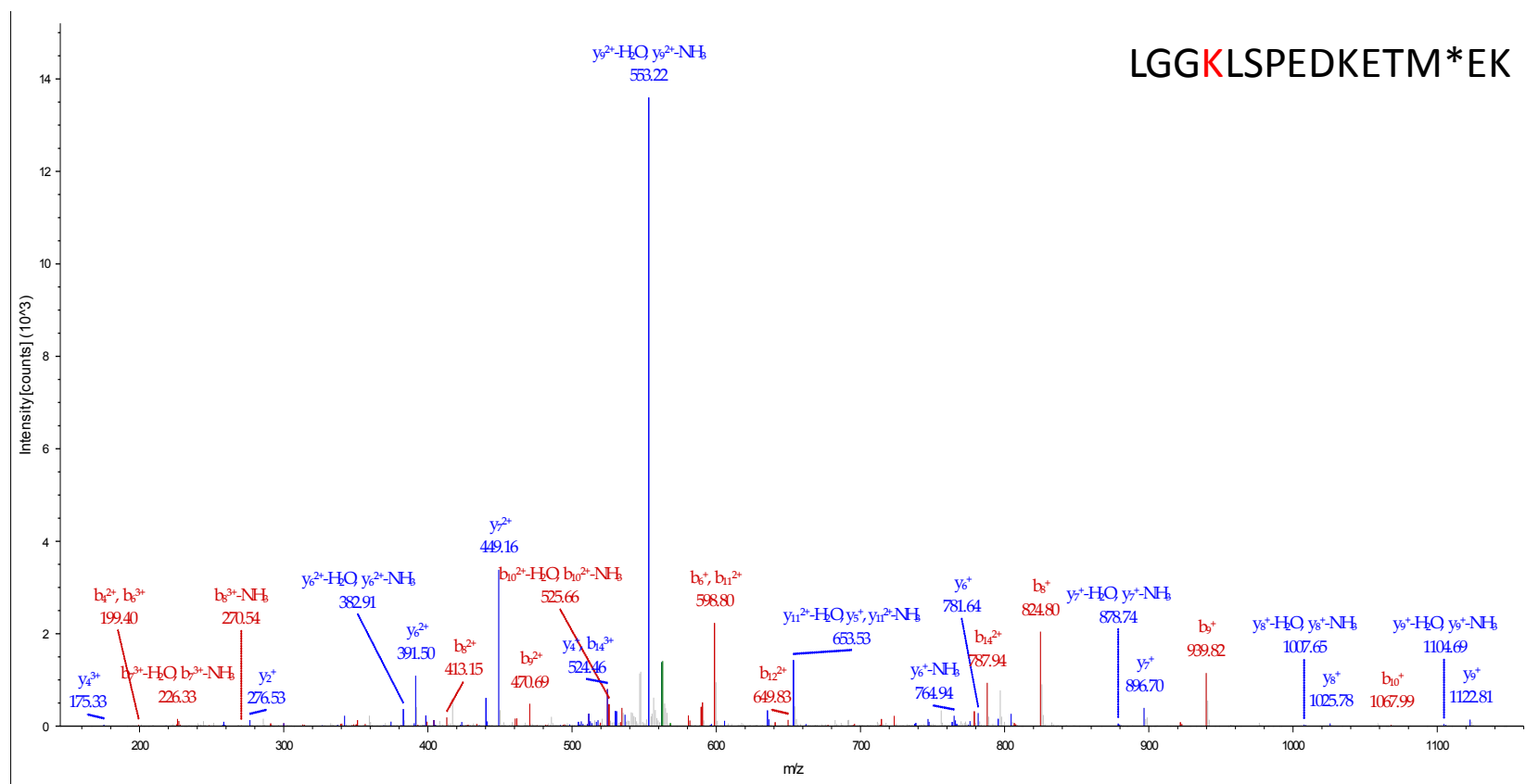
(8)

Figure S1. Cont.



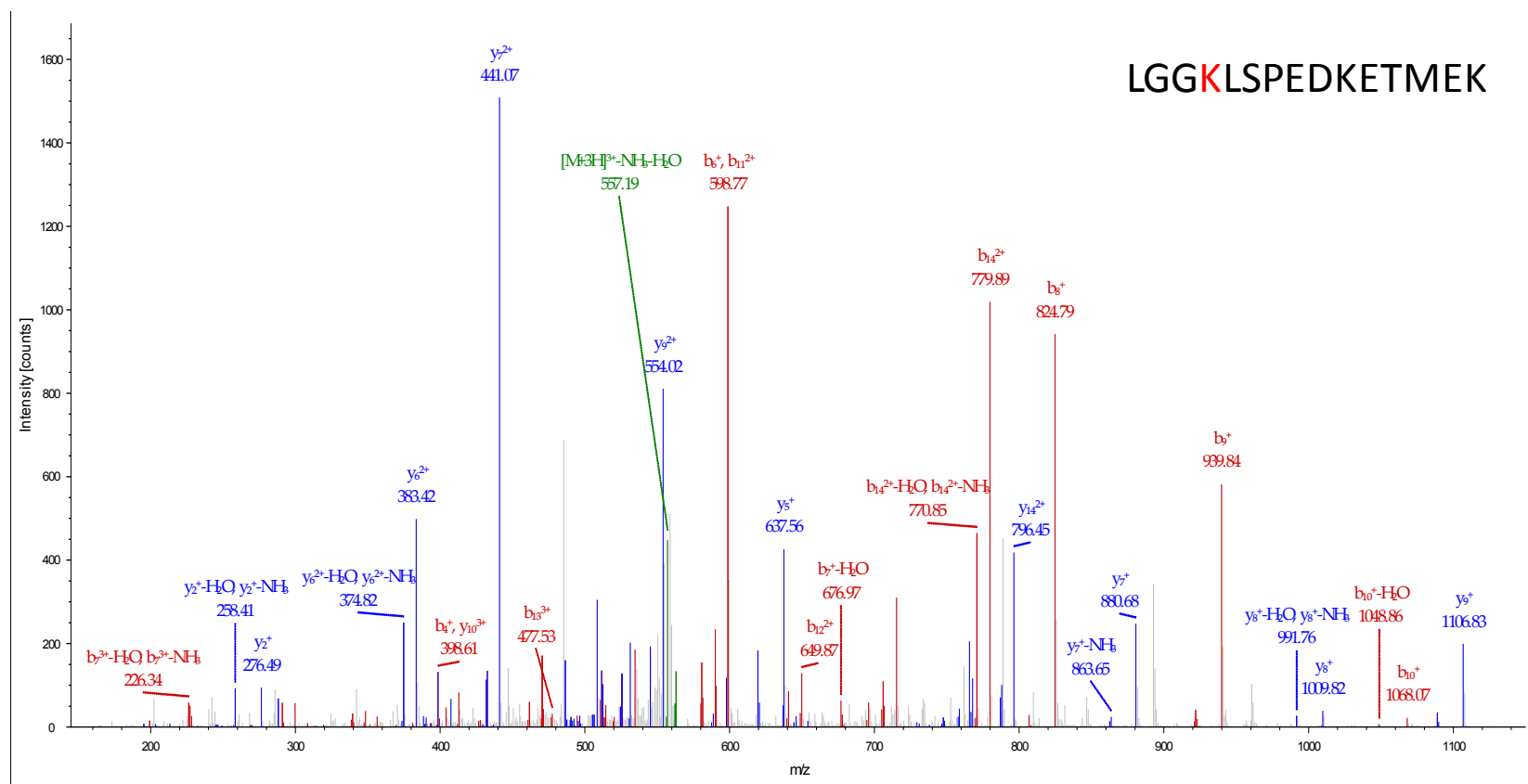
(9)

Figure S1. Cont.



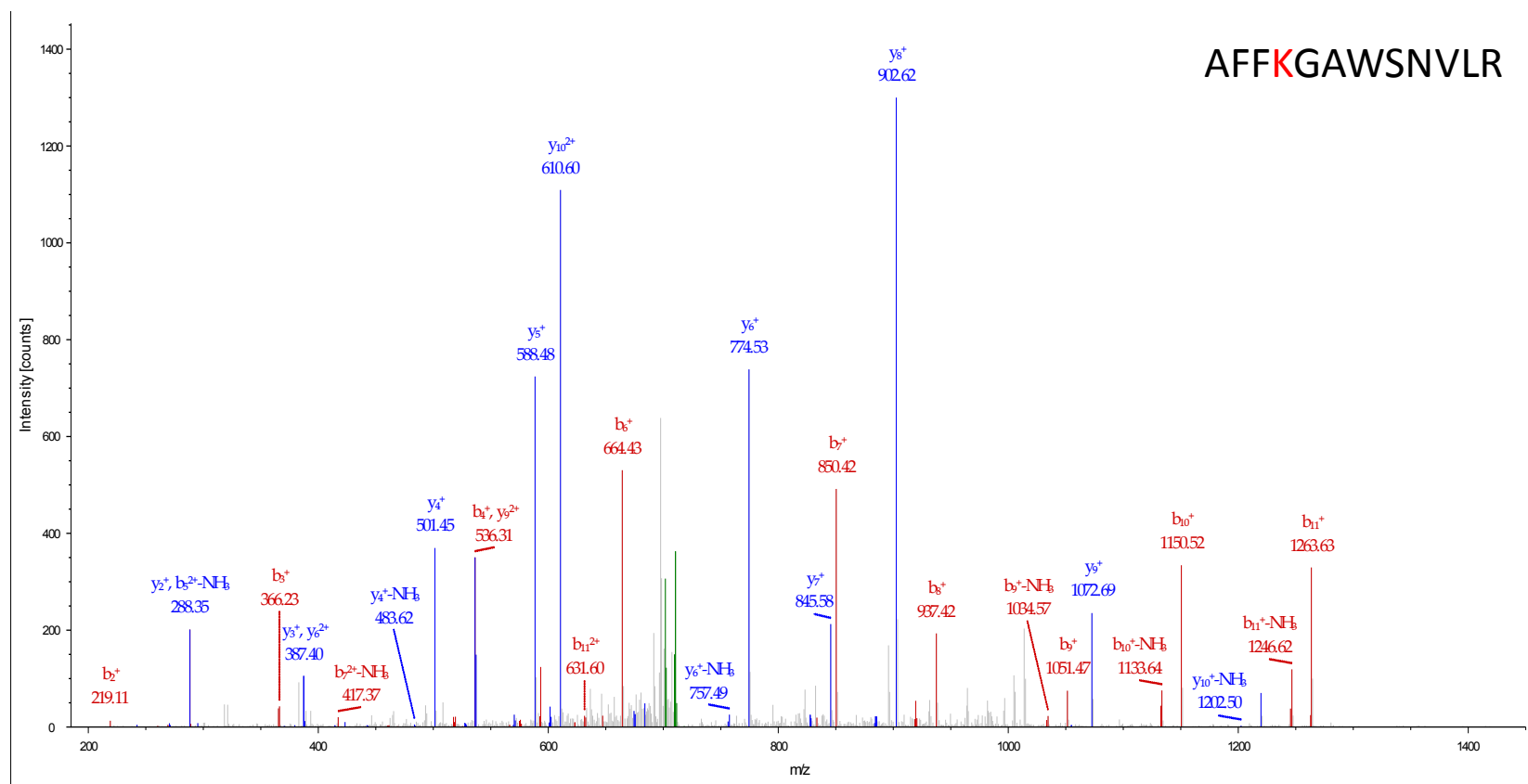
(10)

Figure S1. Cont.



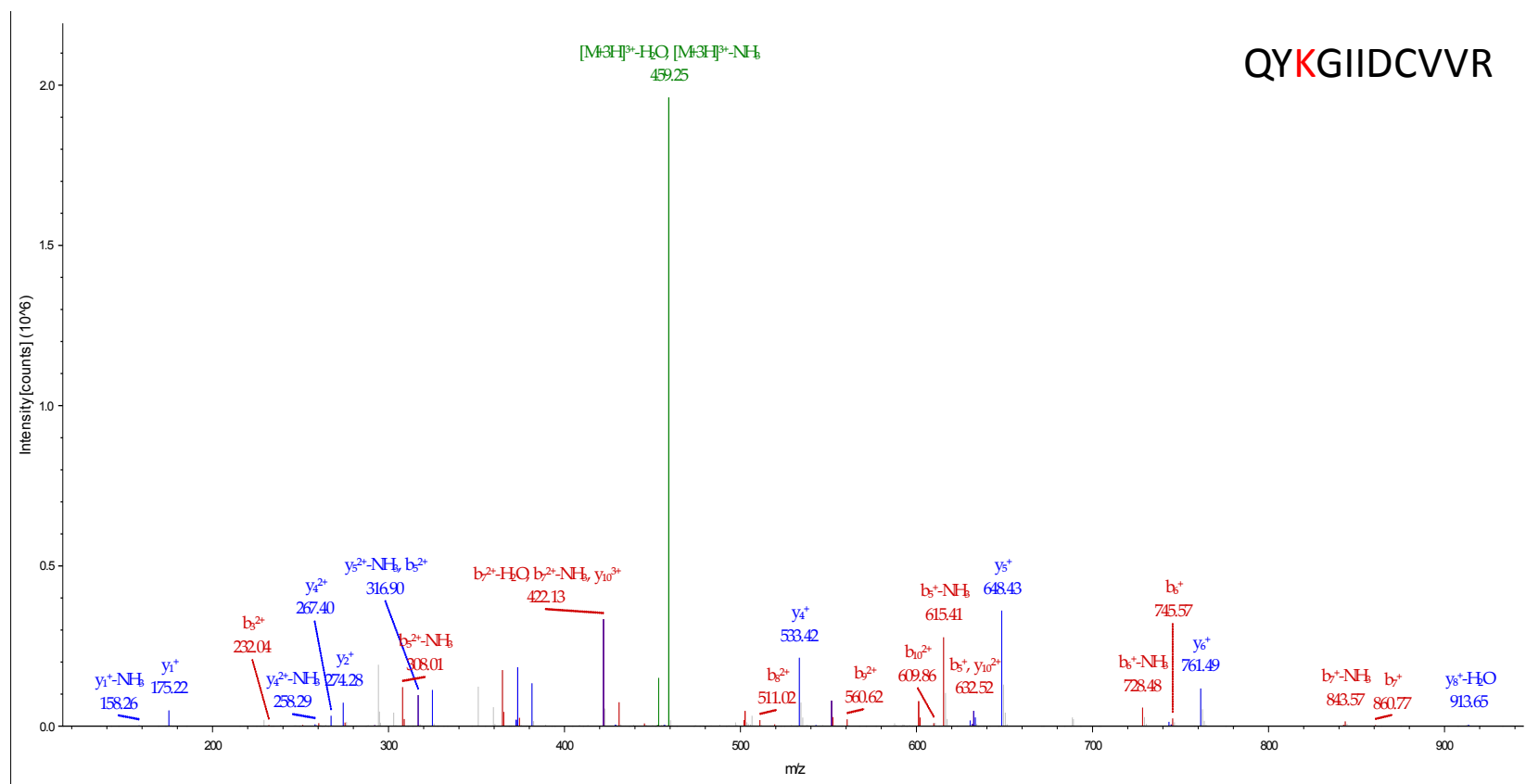
(11)

Figure S1. Cont.



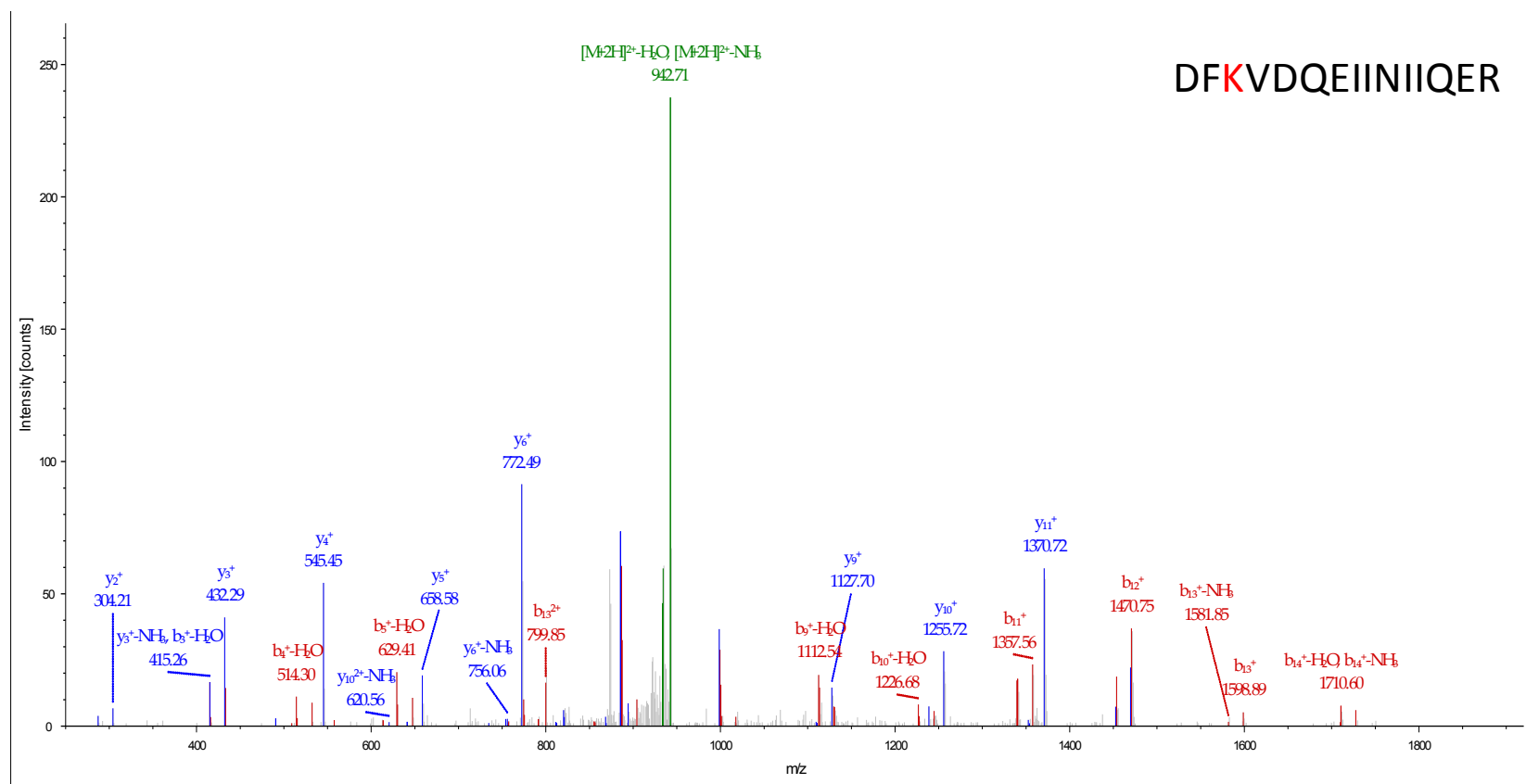
(12)

Figure S1. Cont.



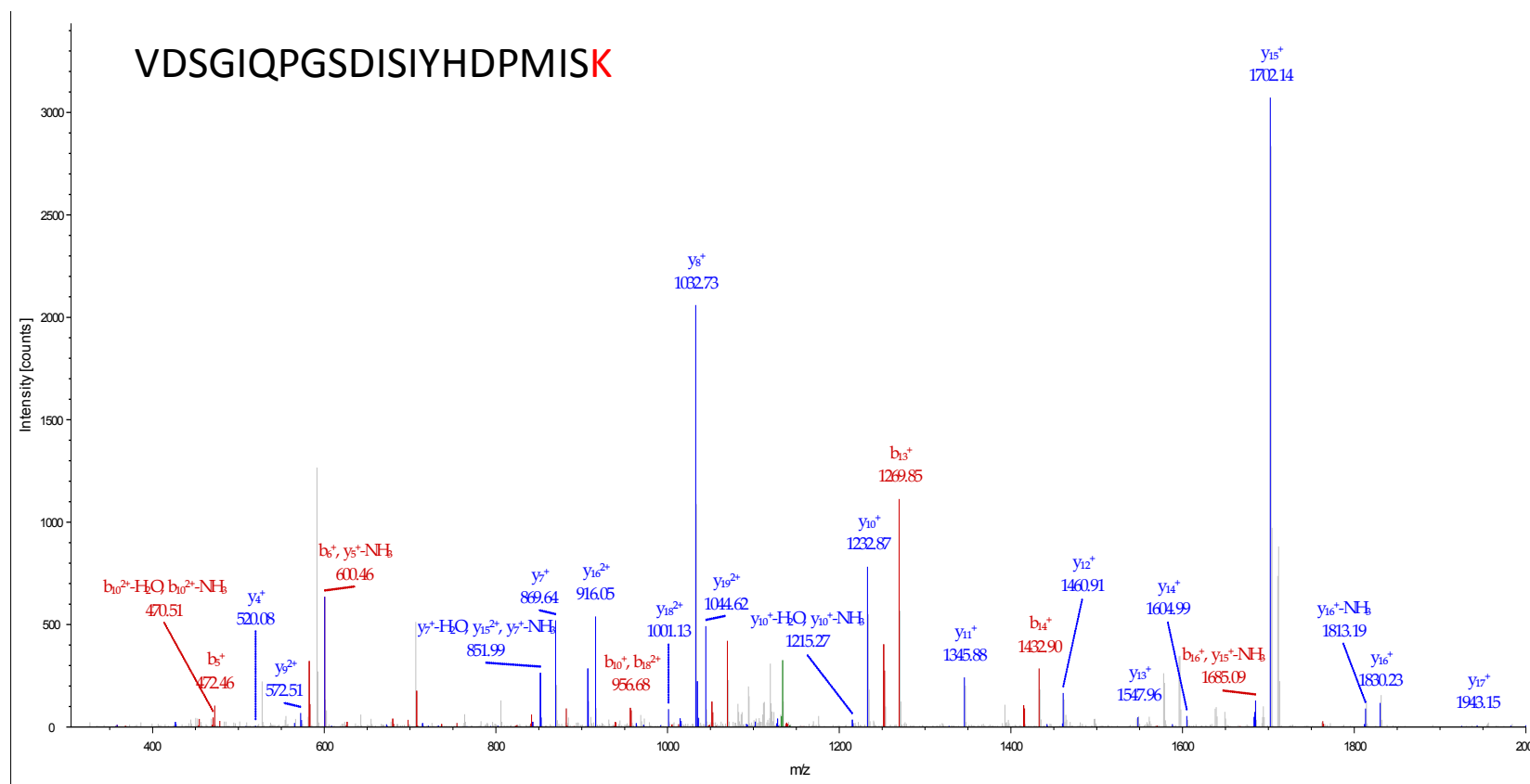
(13)

Figure S1. Cont.



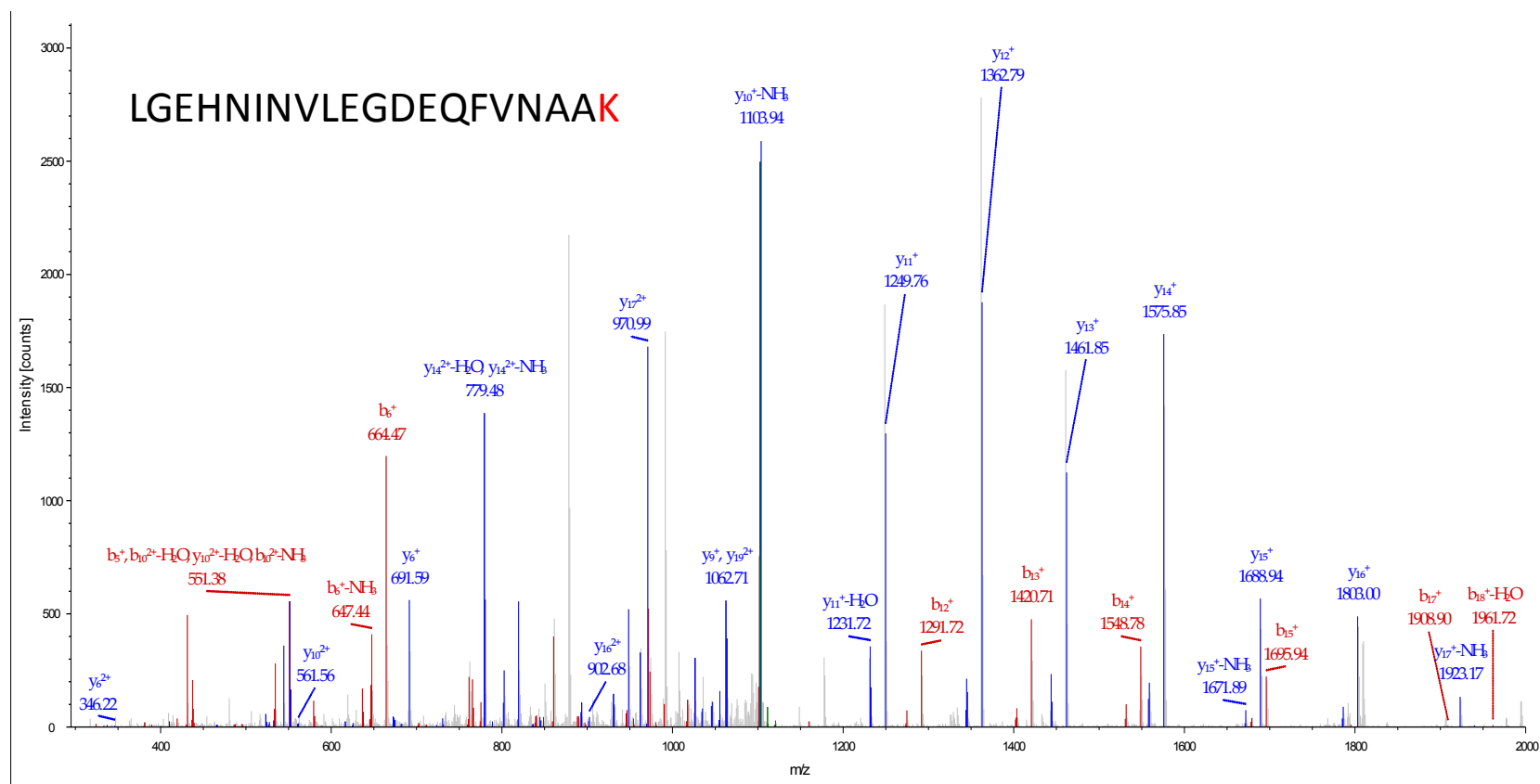
(14)

Figure S1. Cont.



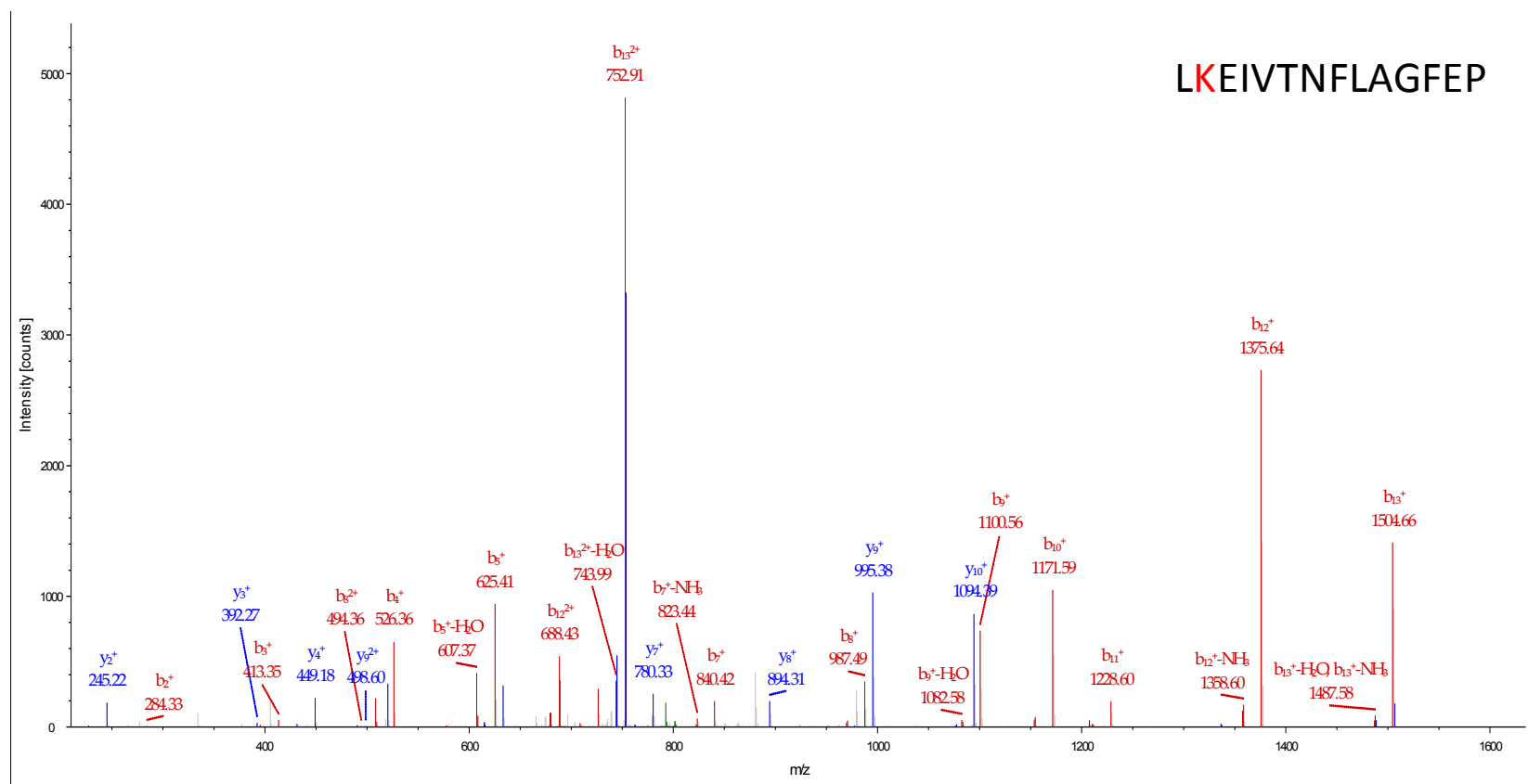
(15)

Figure S1. Cont.



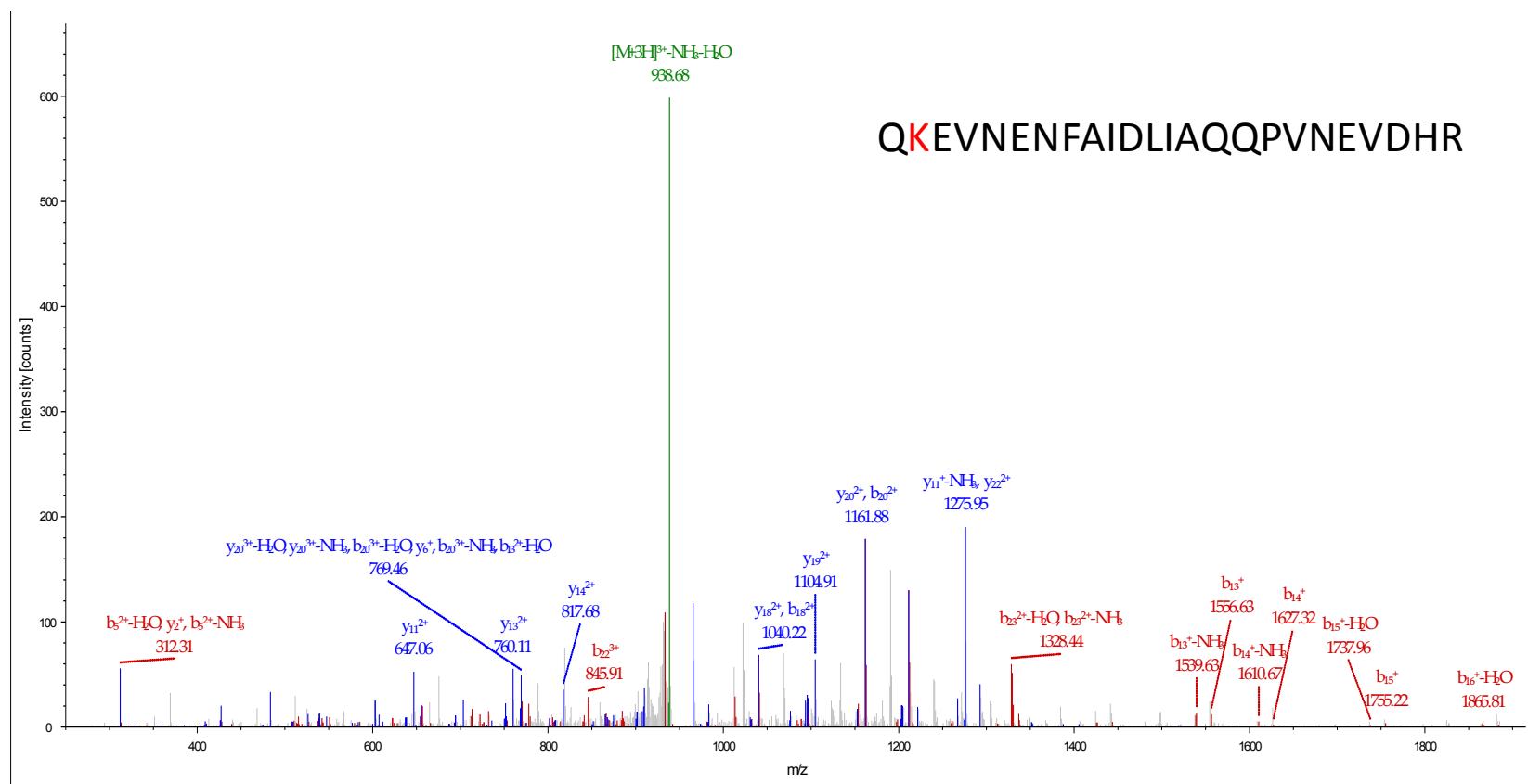
(16)

Figure S1. Cont.



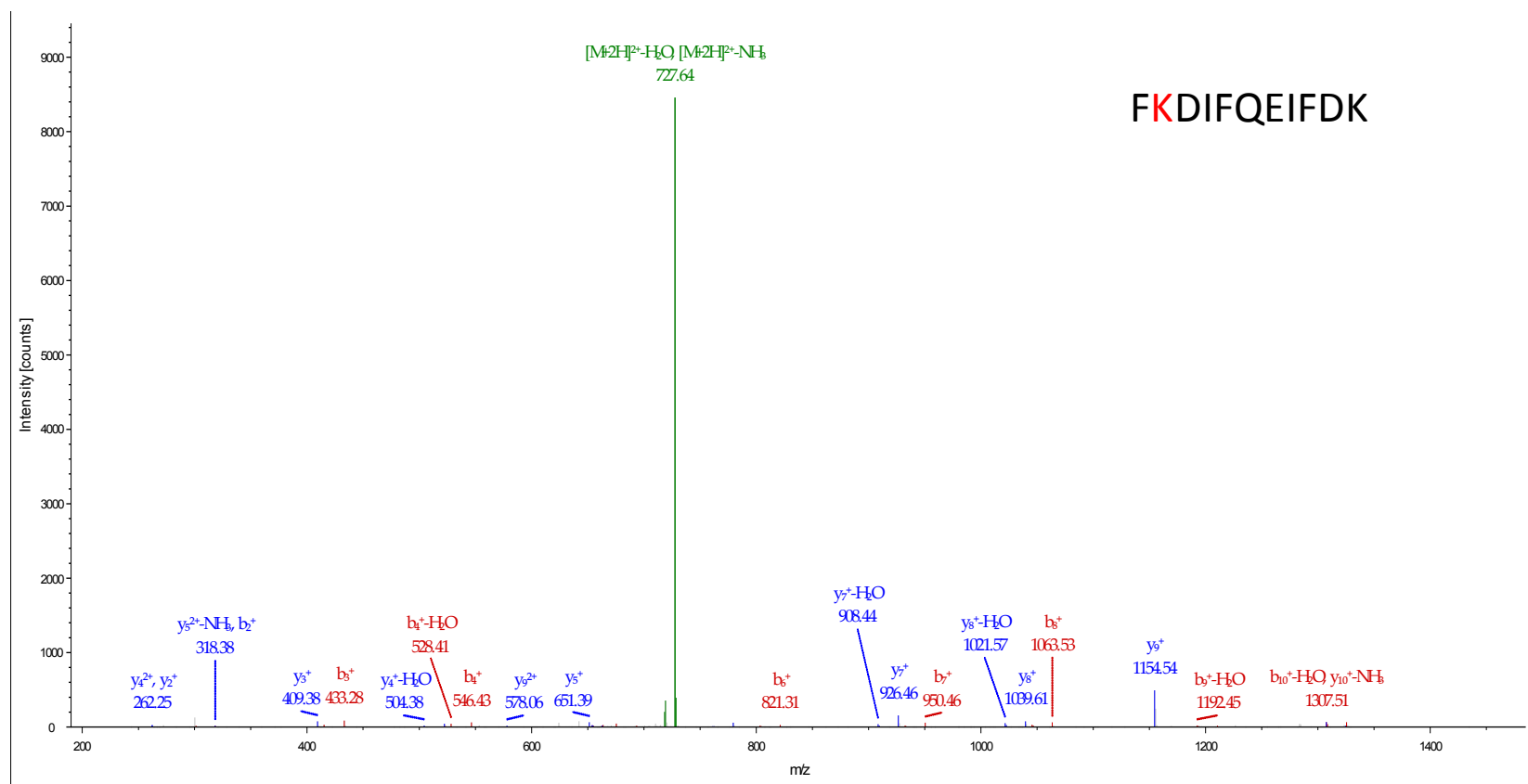
(17)

Figure S1. Cont.



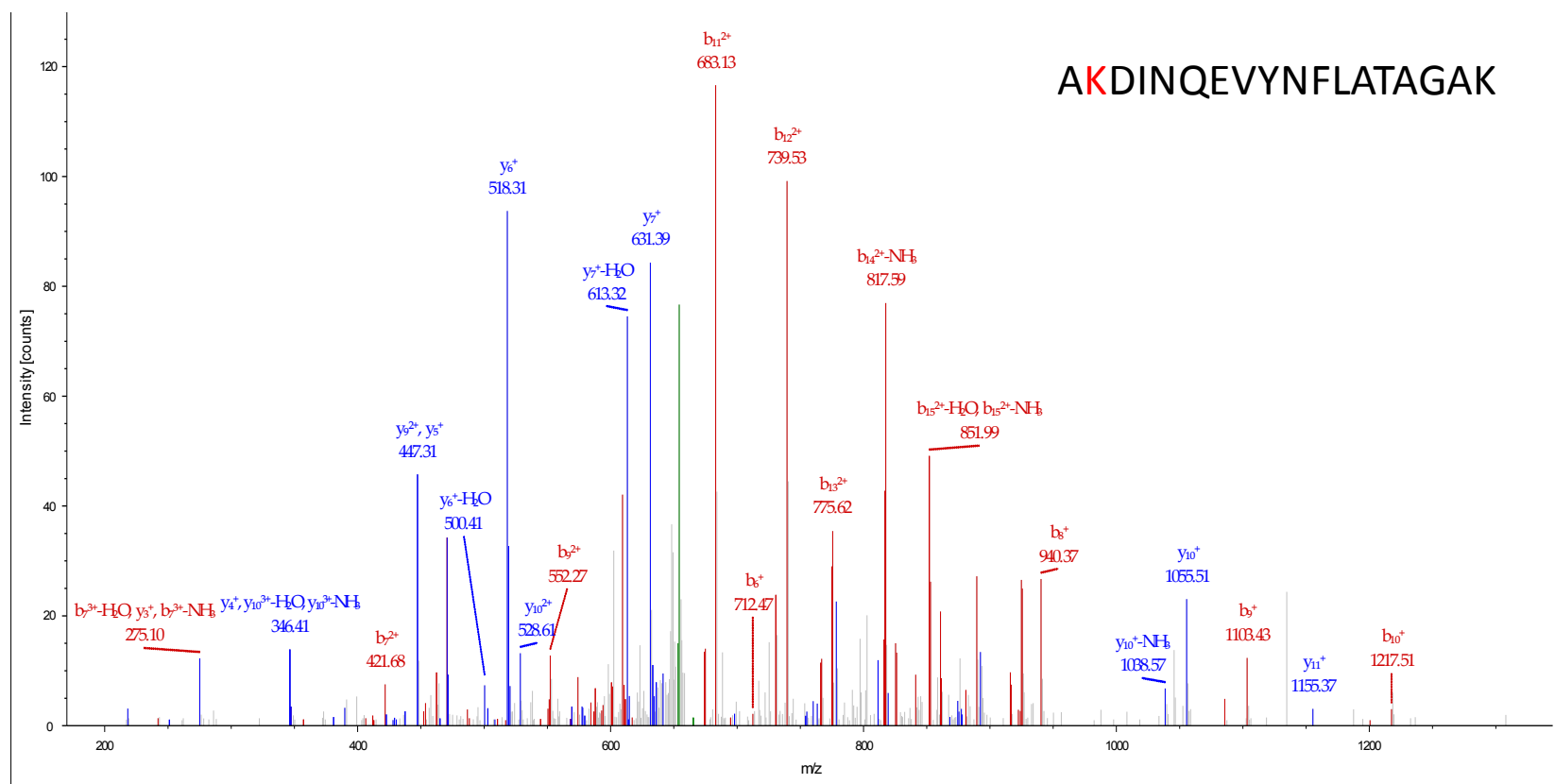
(18)

Figure S1. Cont.



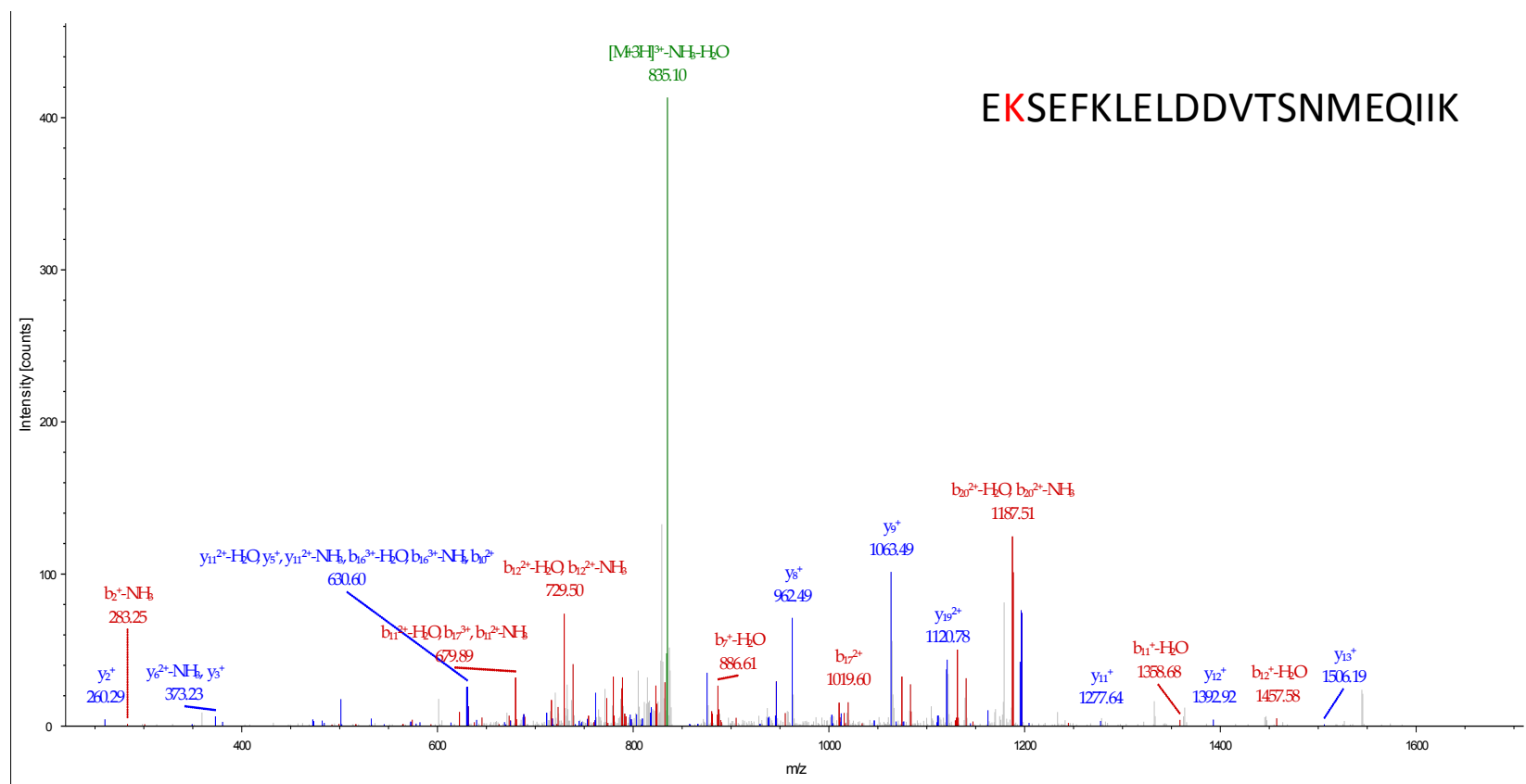
(19)

Figure S1. Cont.



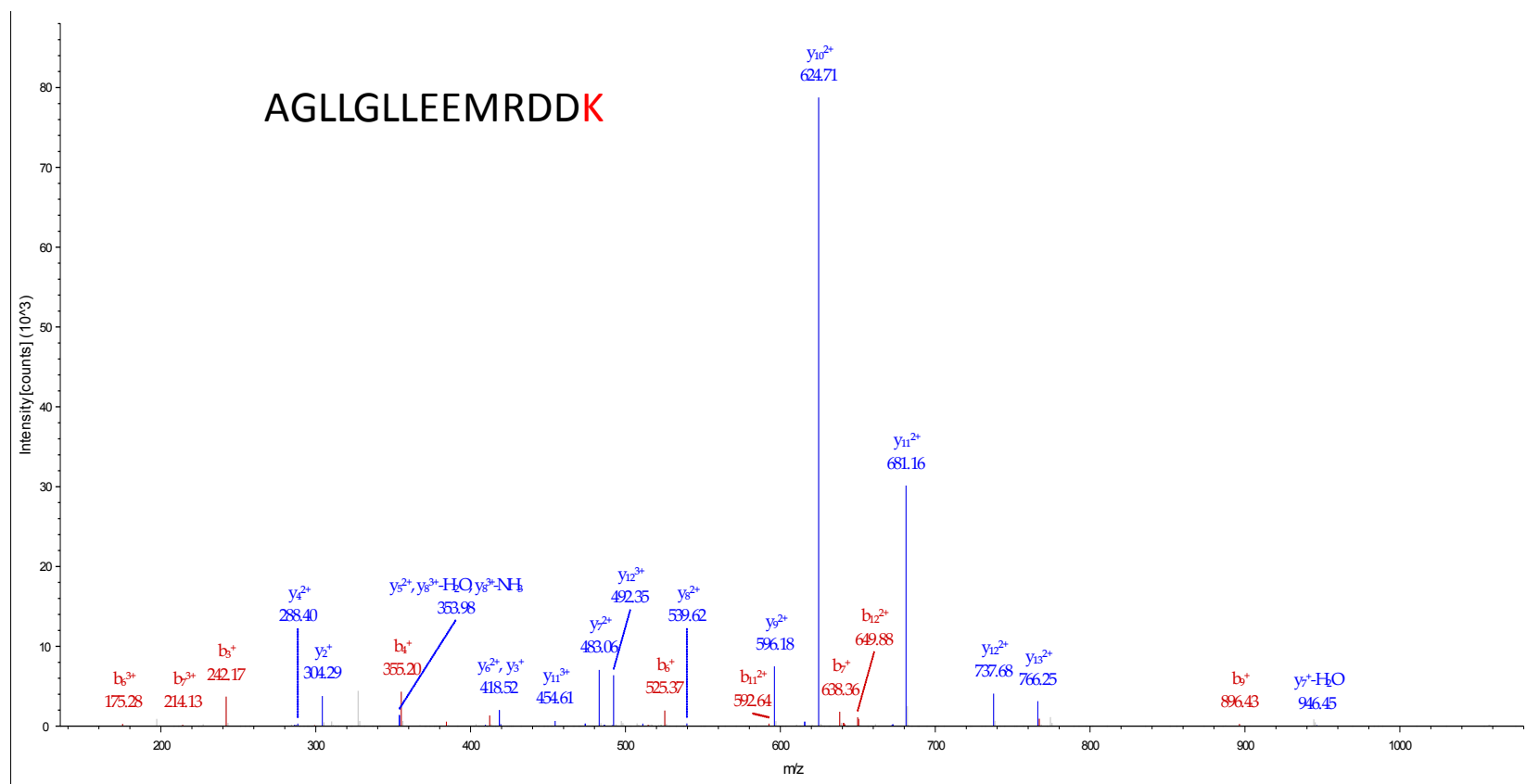
(20)

Figure S1. Cont.



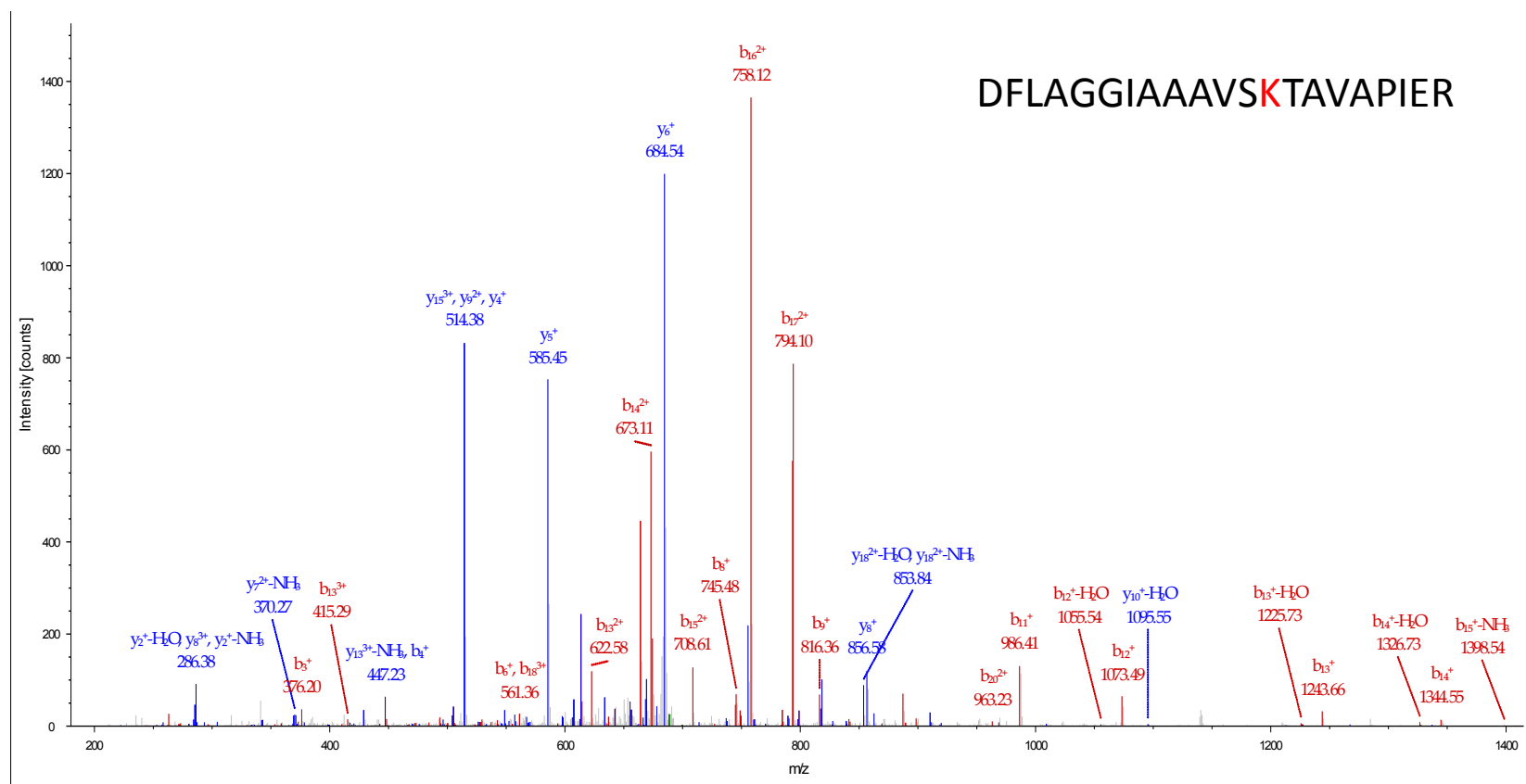
(21)

Figure S1. Cont.



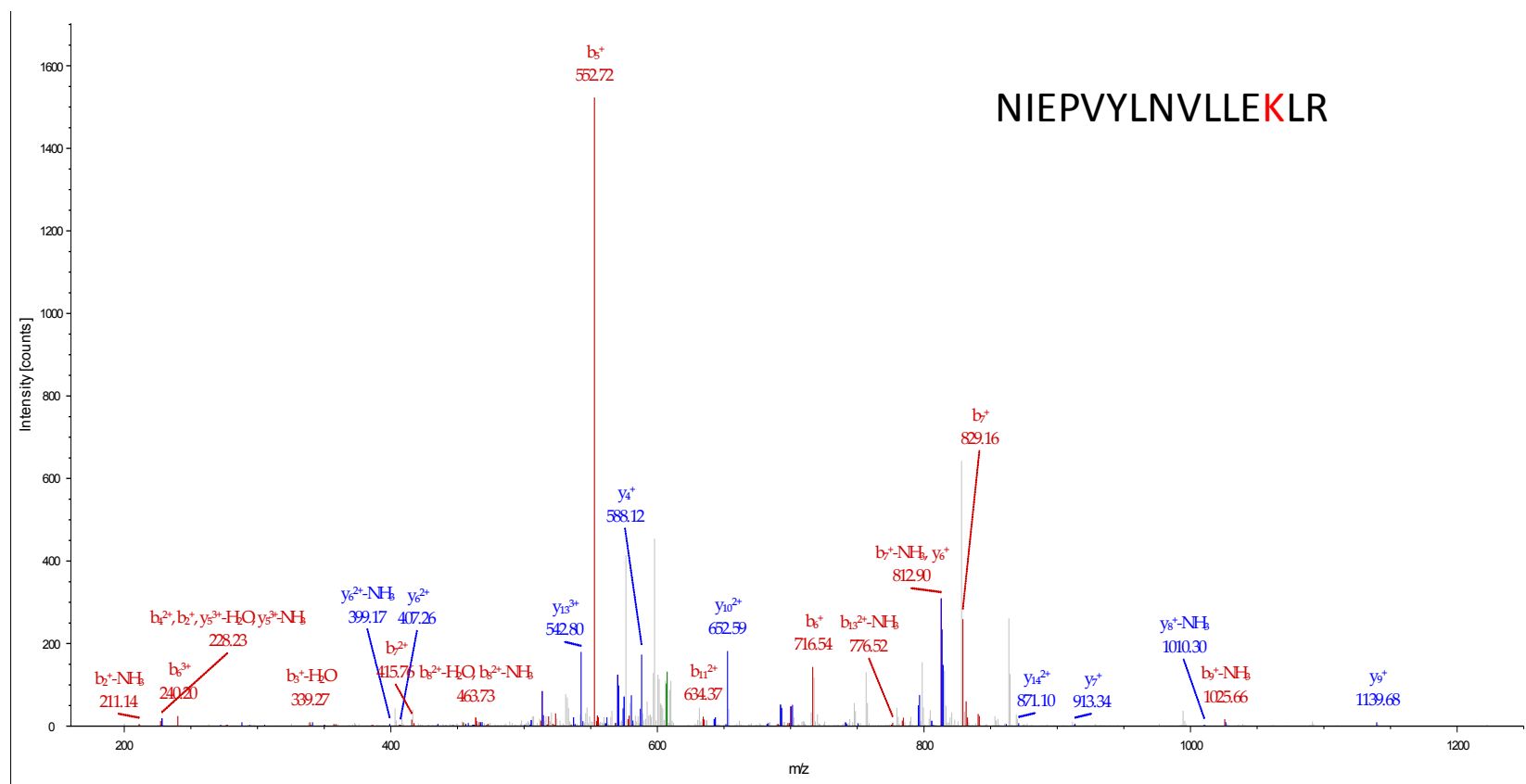
(22)

Figure S1. Cont.



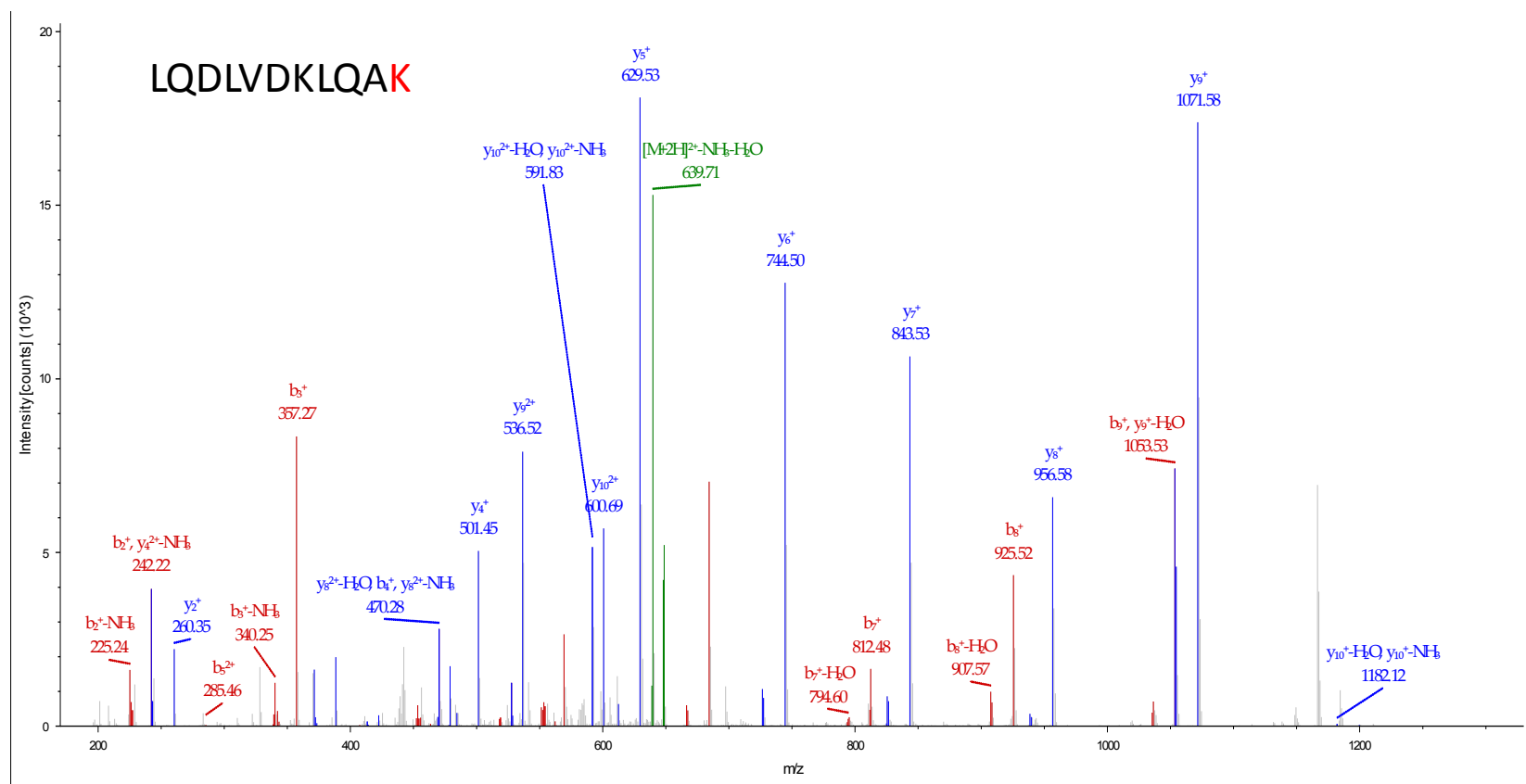
(23)

Figure S1. Cont.



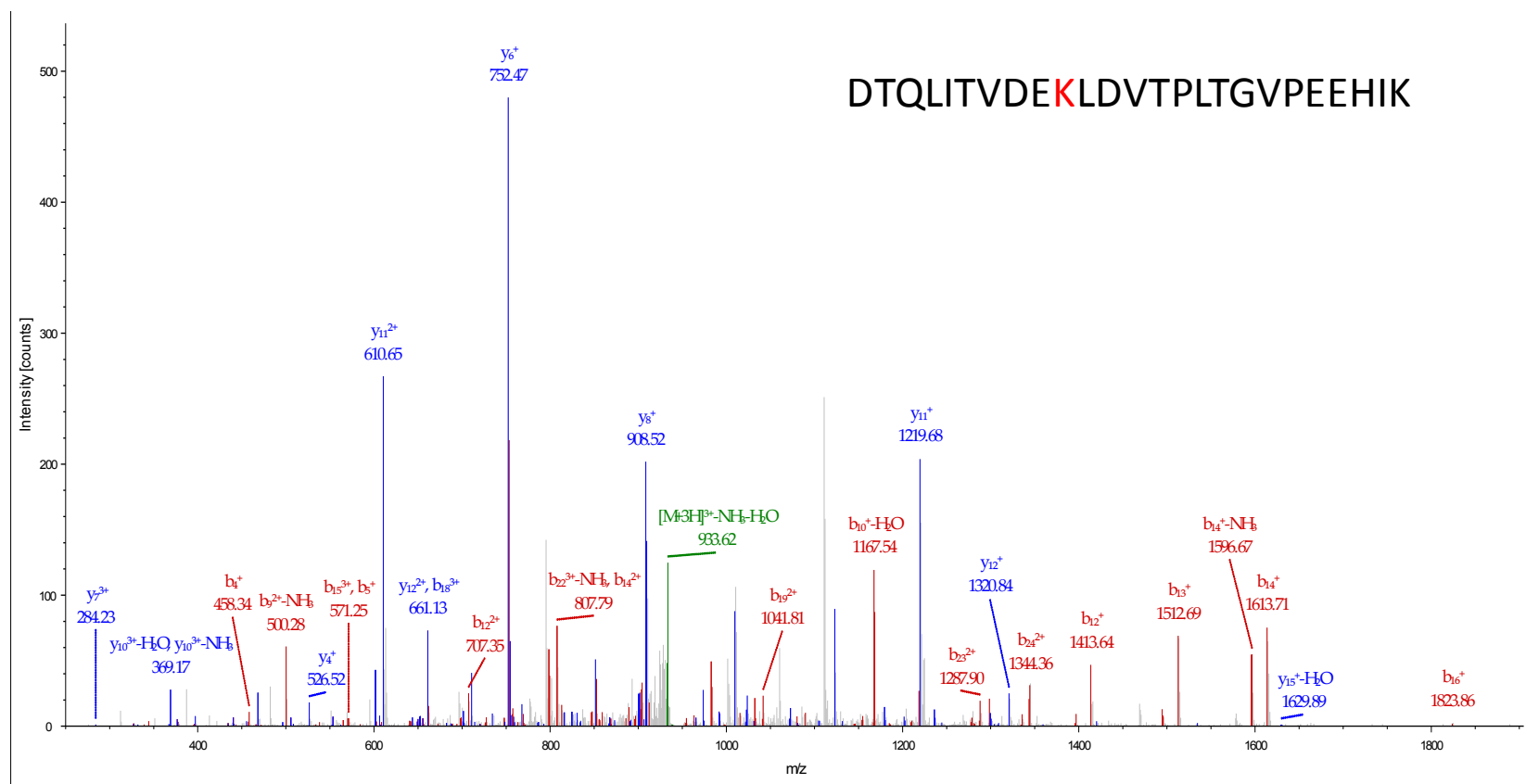
(24)

Figure S1. Cont.



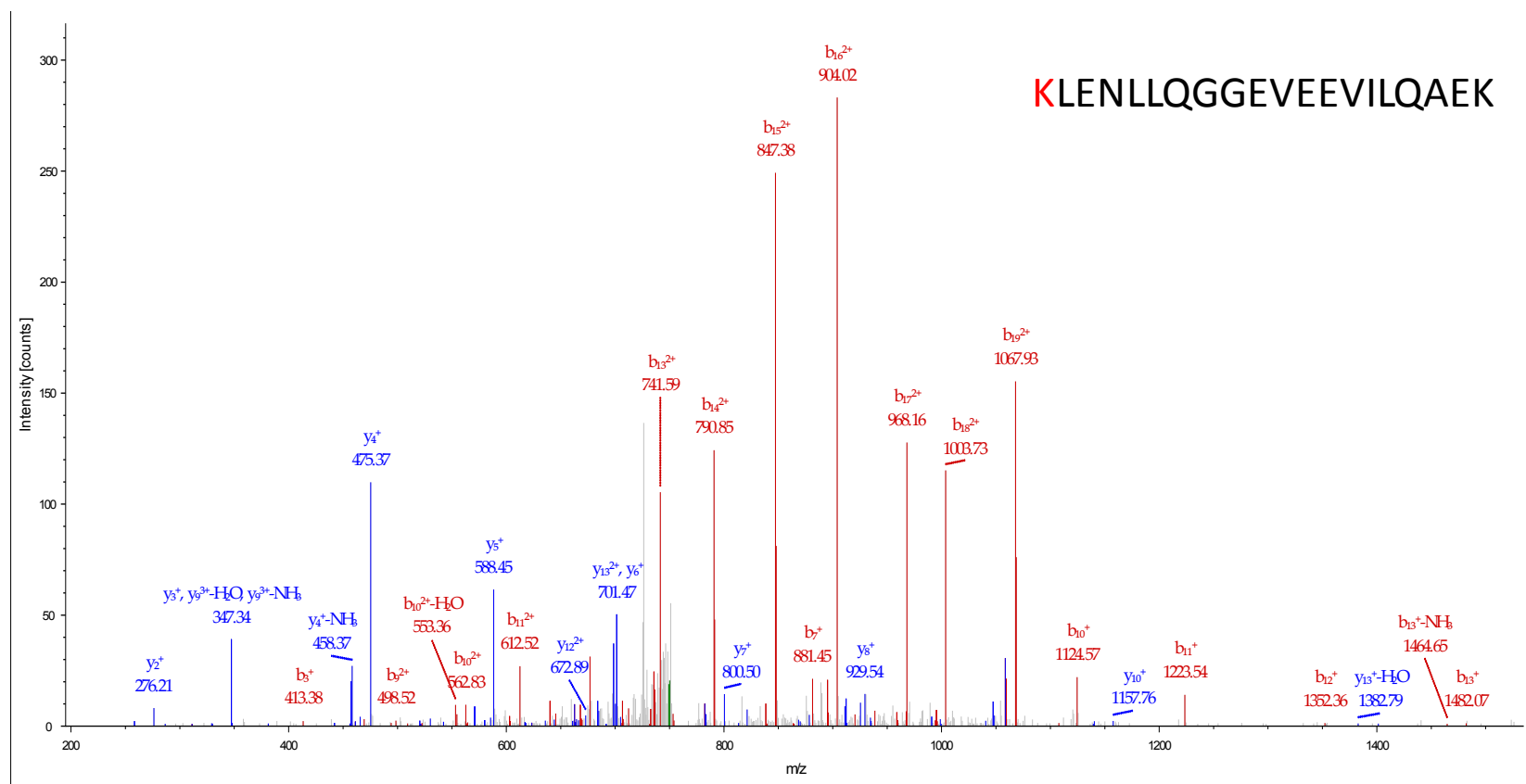
(25)

Figure S1. Cont.



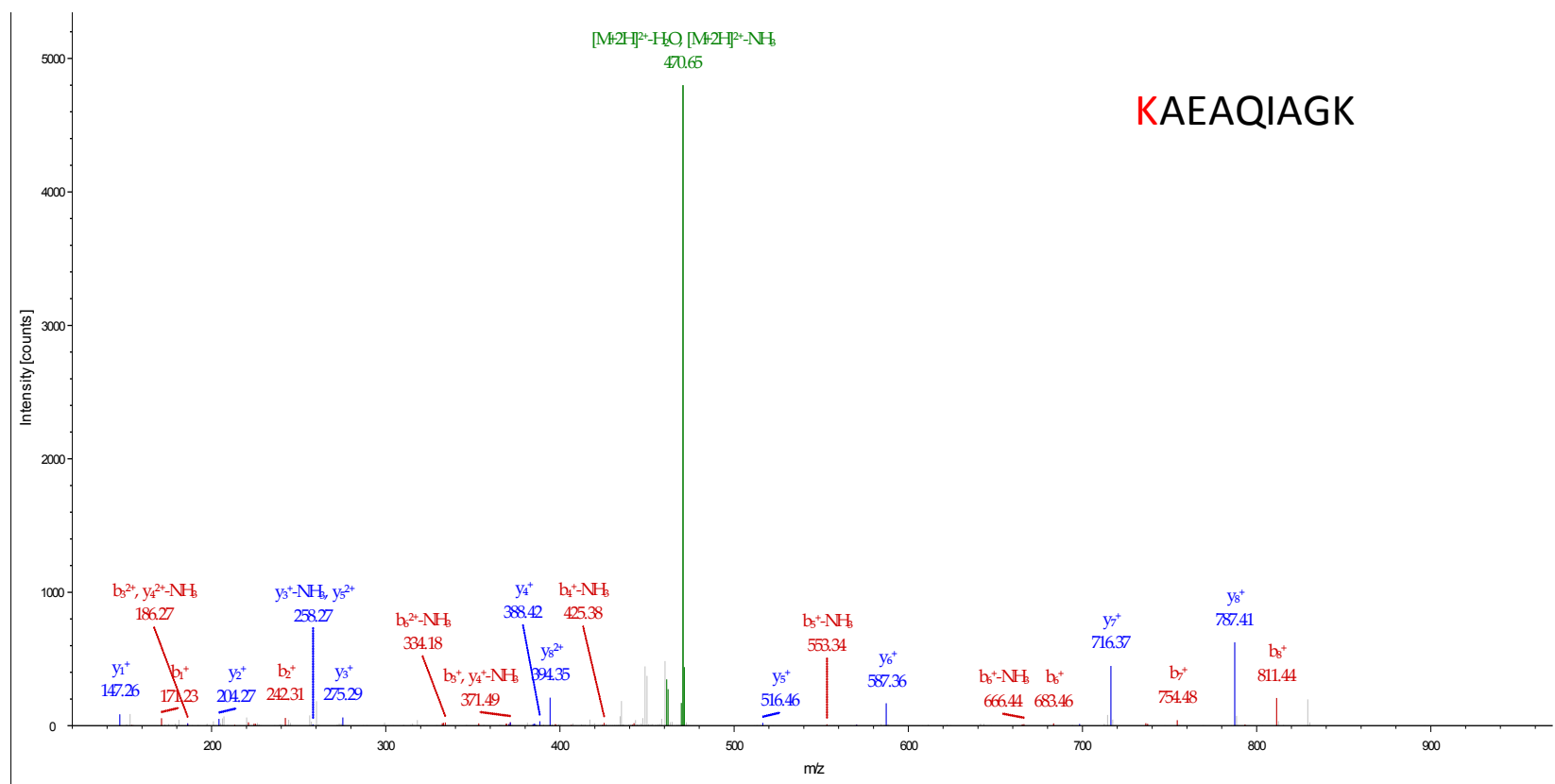
(26)

Figure S1. Cont.



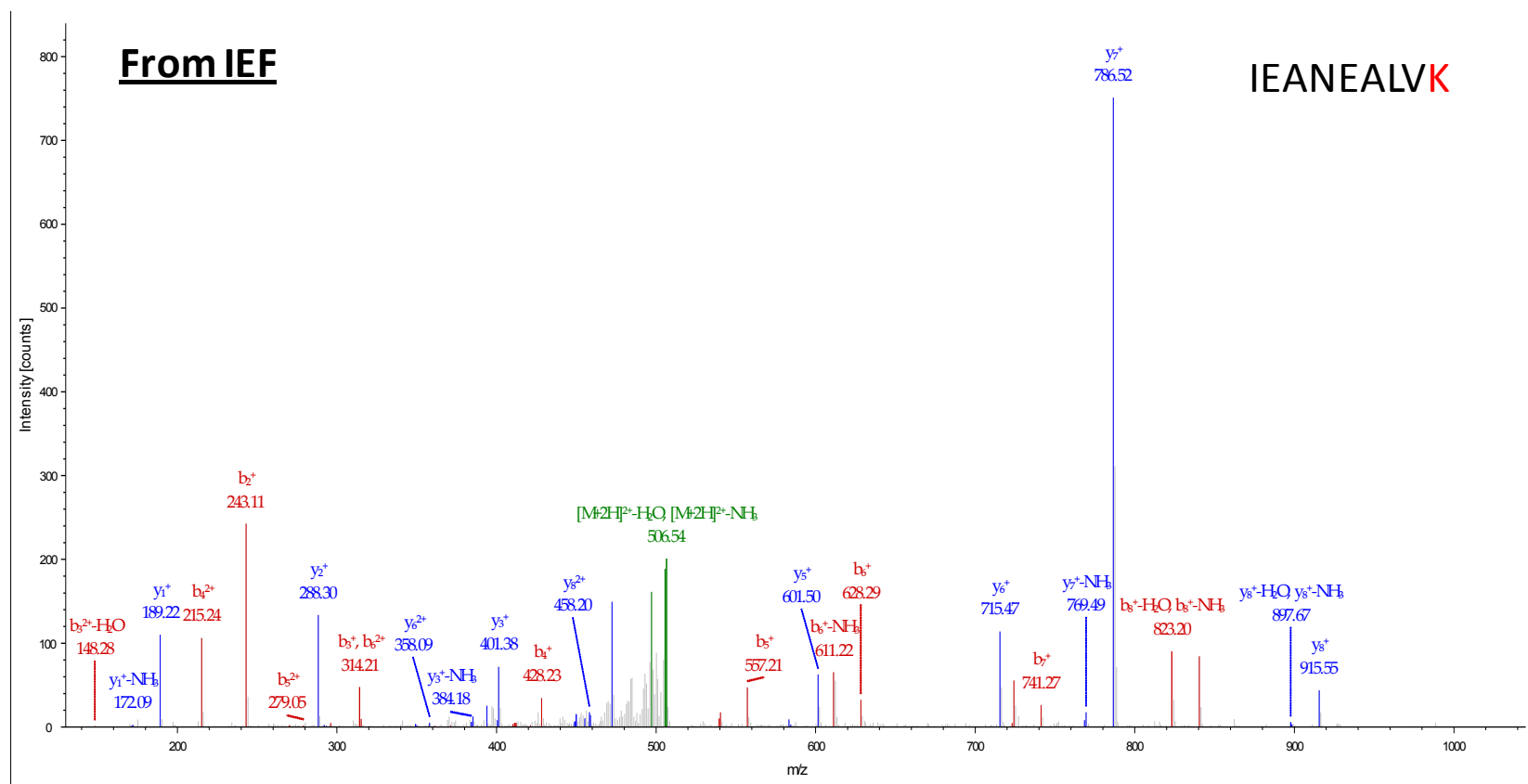
(27)

Figure S1. Cont.



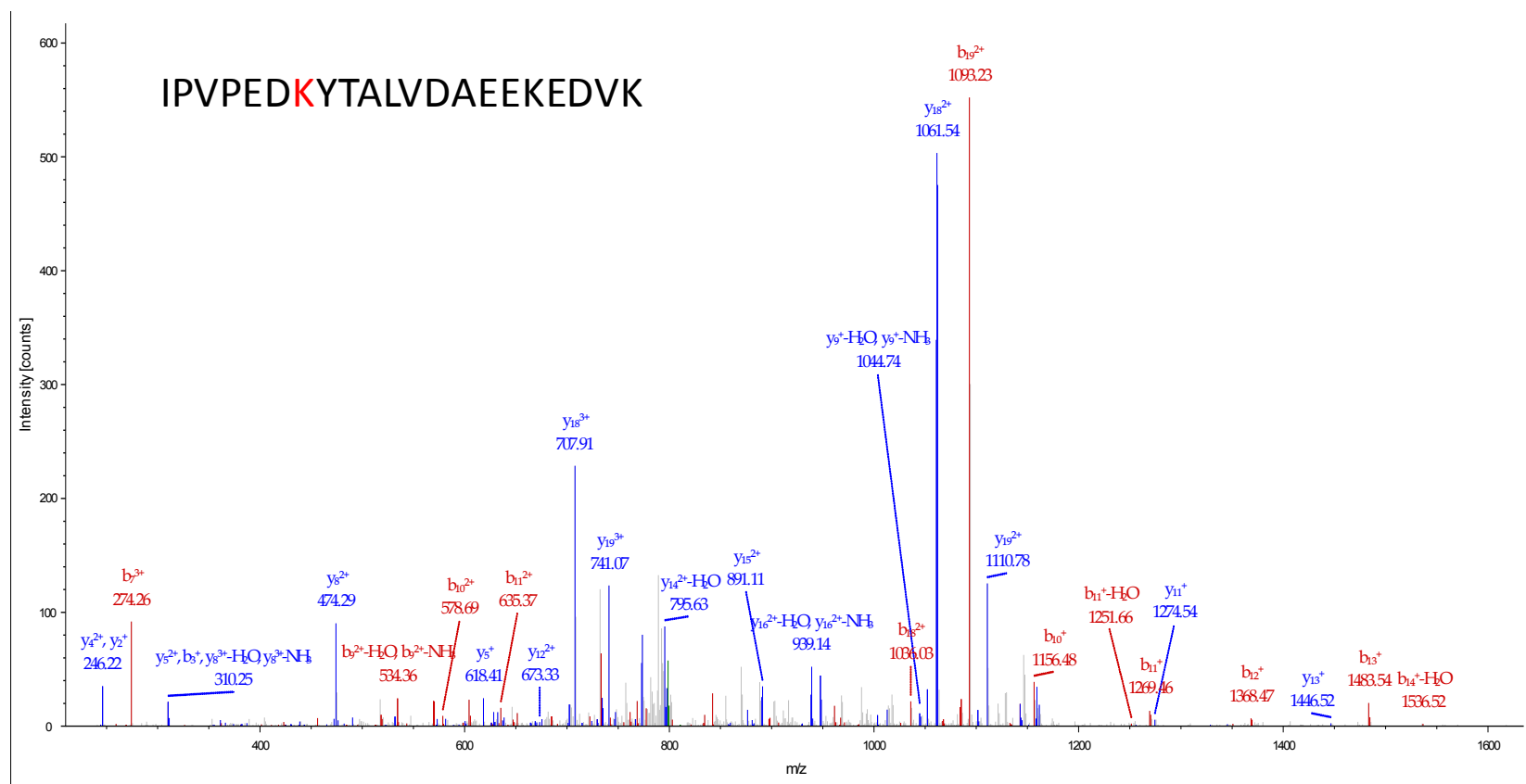
(28)

Figure S1. Cont.



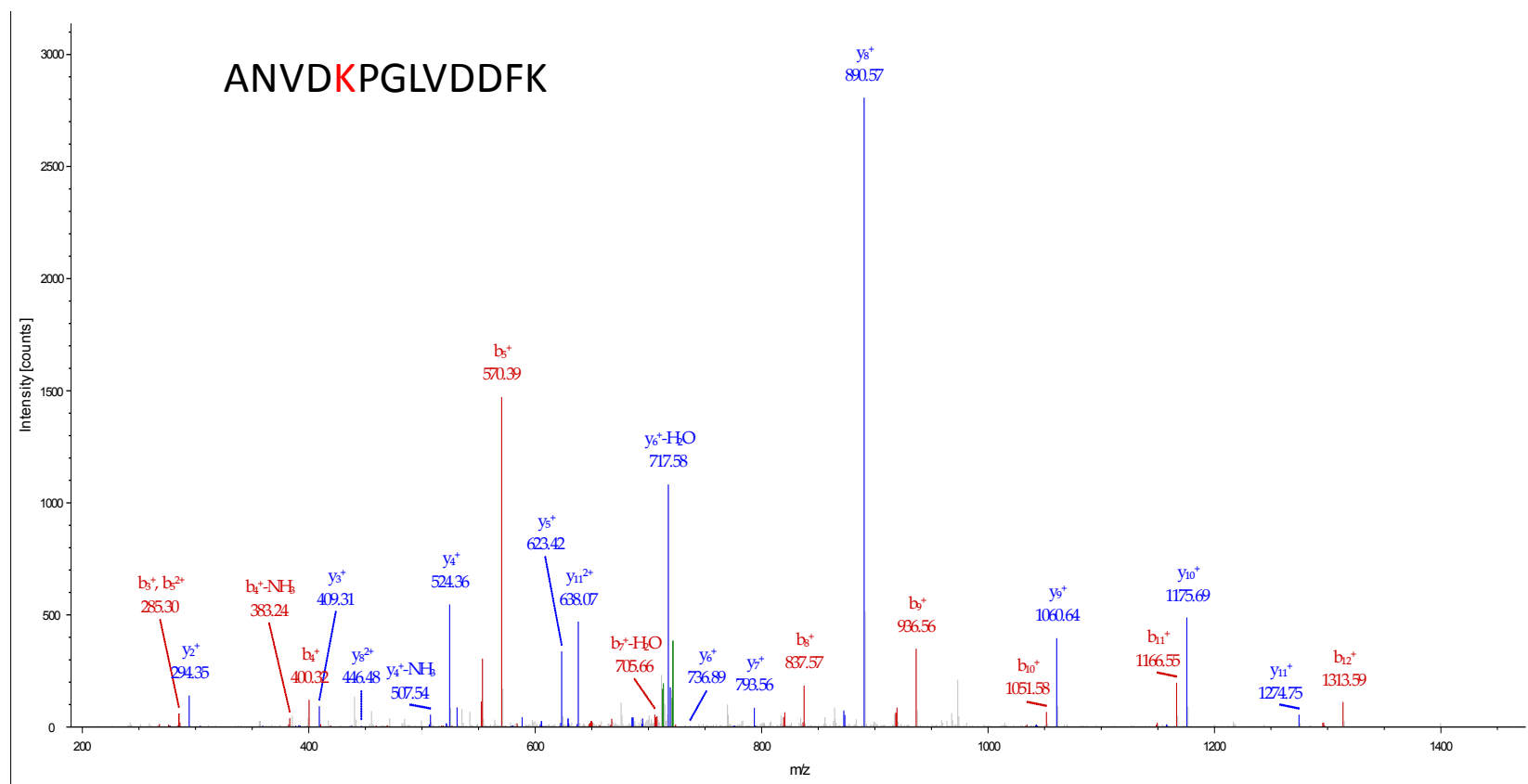
(29)

Figure S1. Cont.



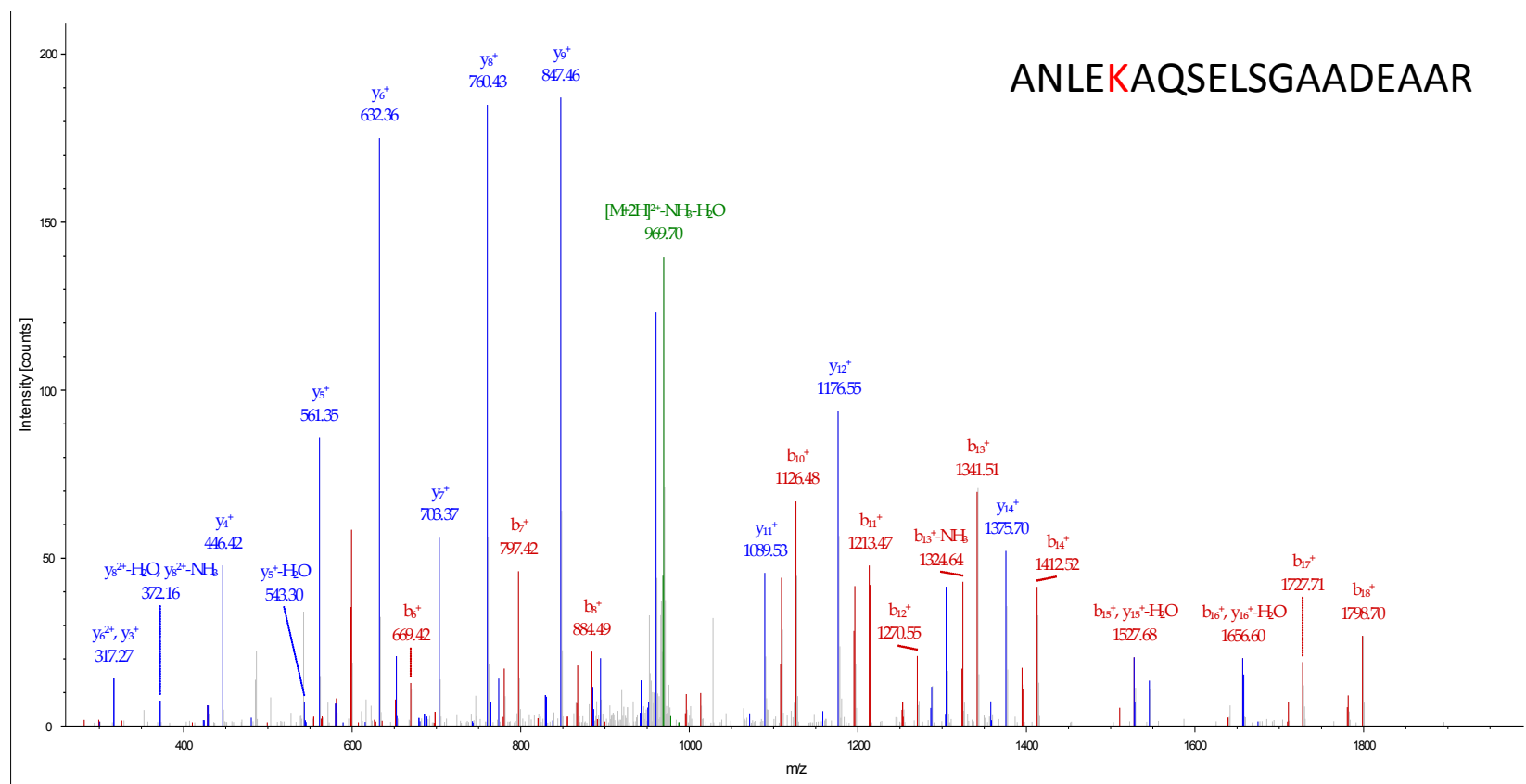
(30)

Figure S1. Cont.



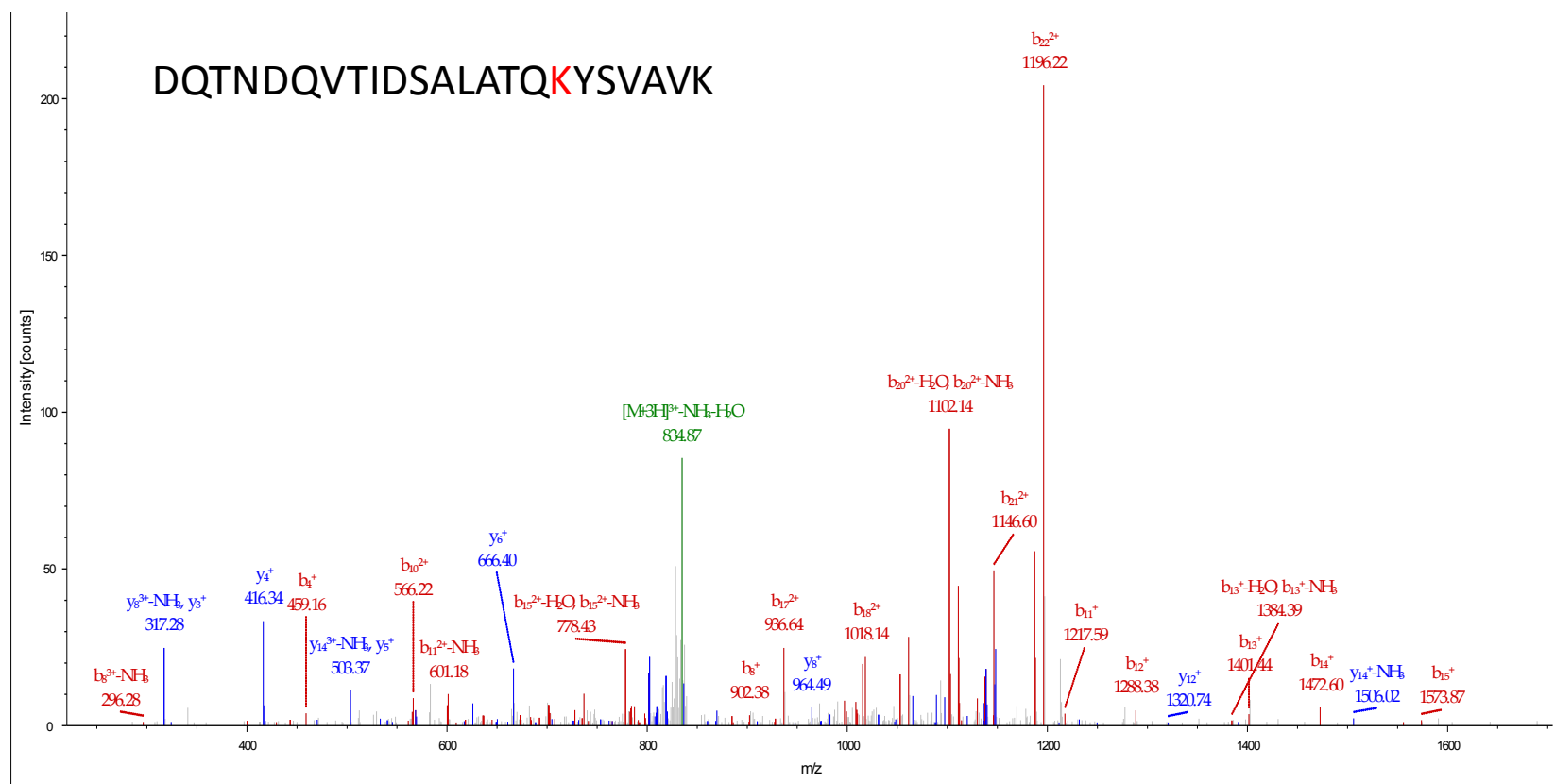
(31)

Figure S1. Cont.



(32)

Figure S1. Cont.



(33)

(34)

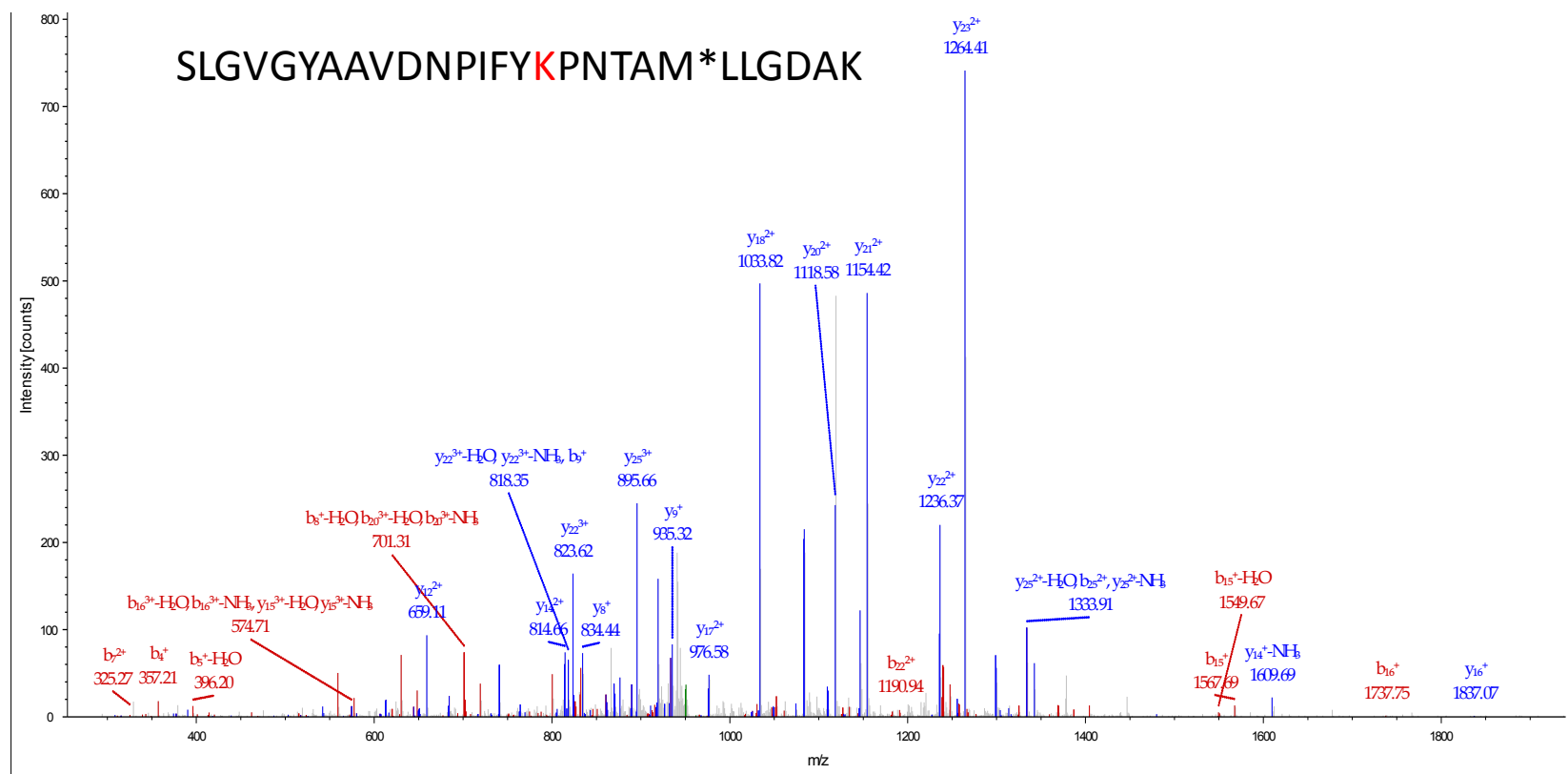
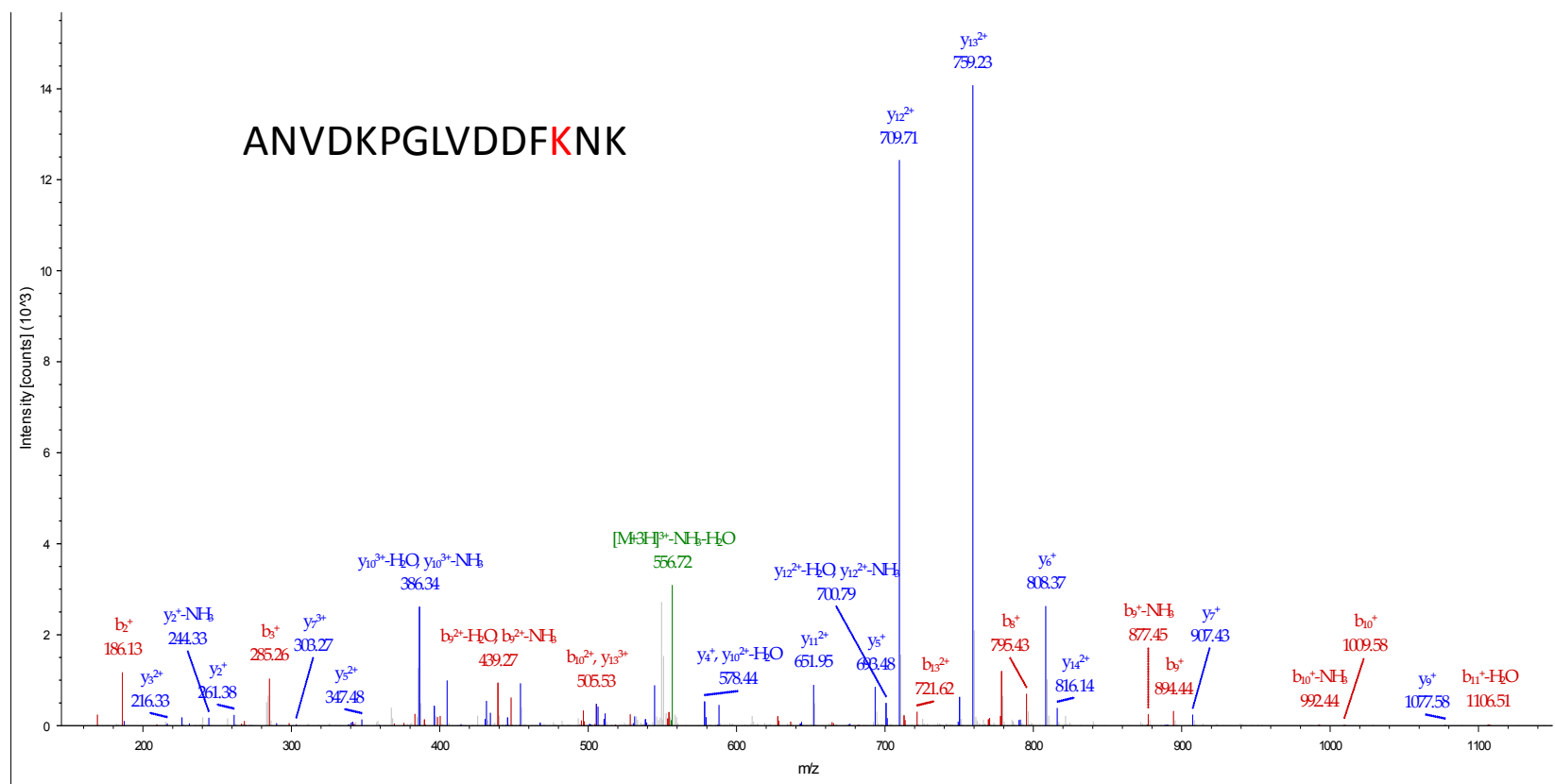
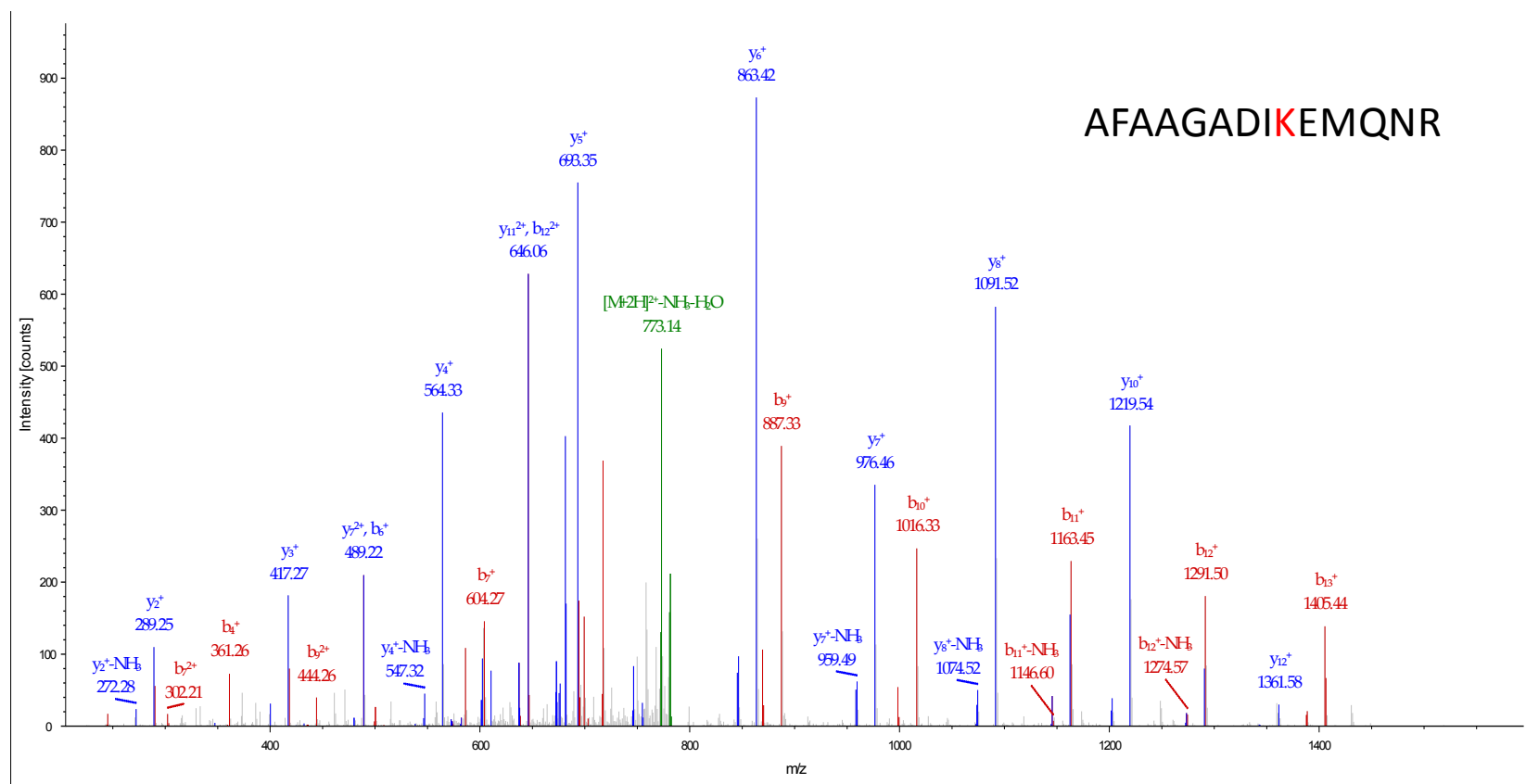


Figure S1. Cont.



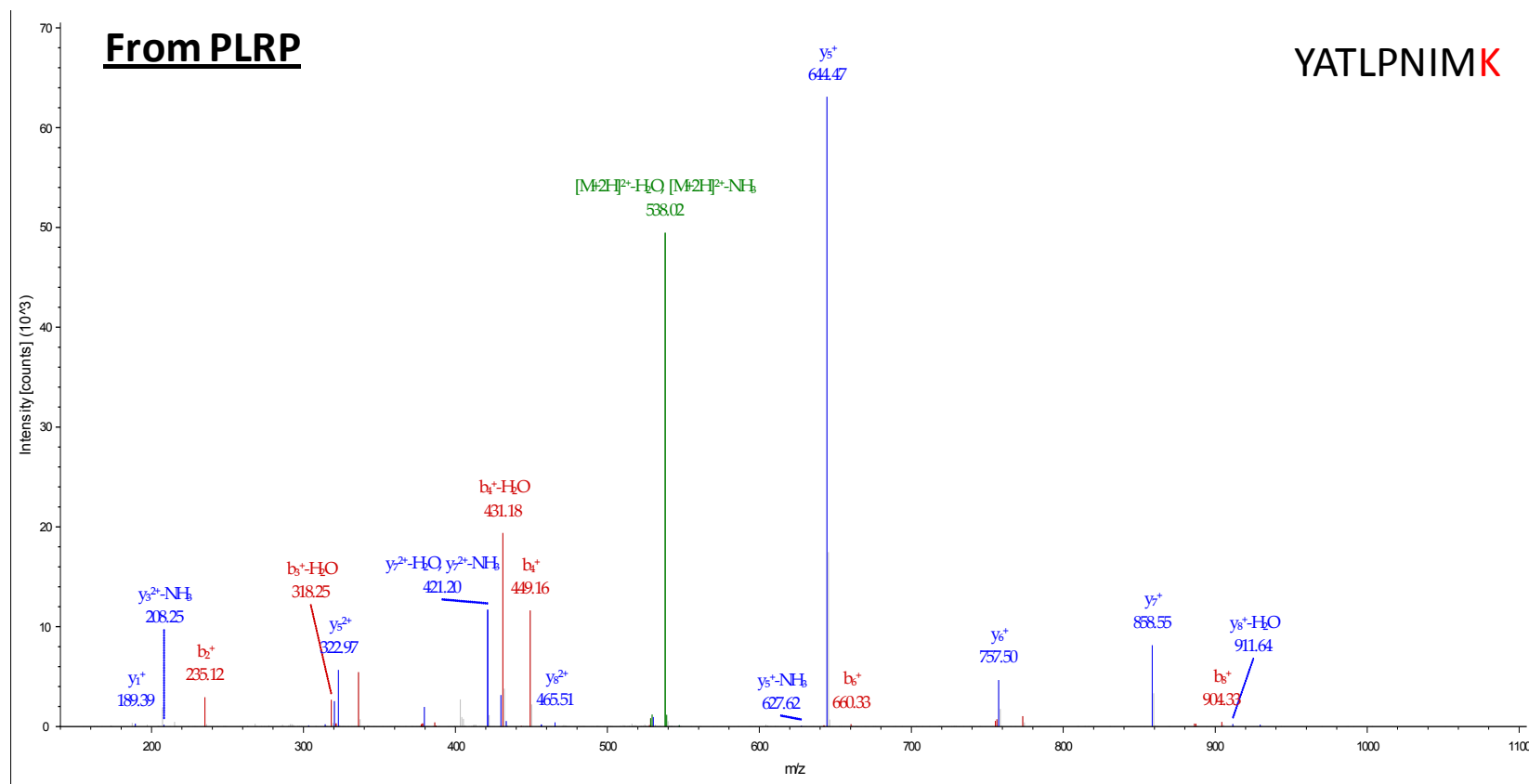
(35)

Figure S1. Cont.



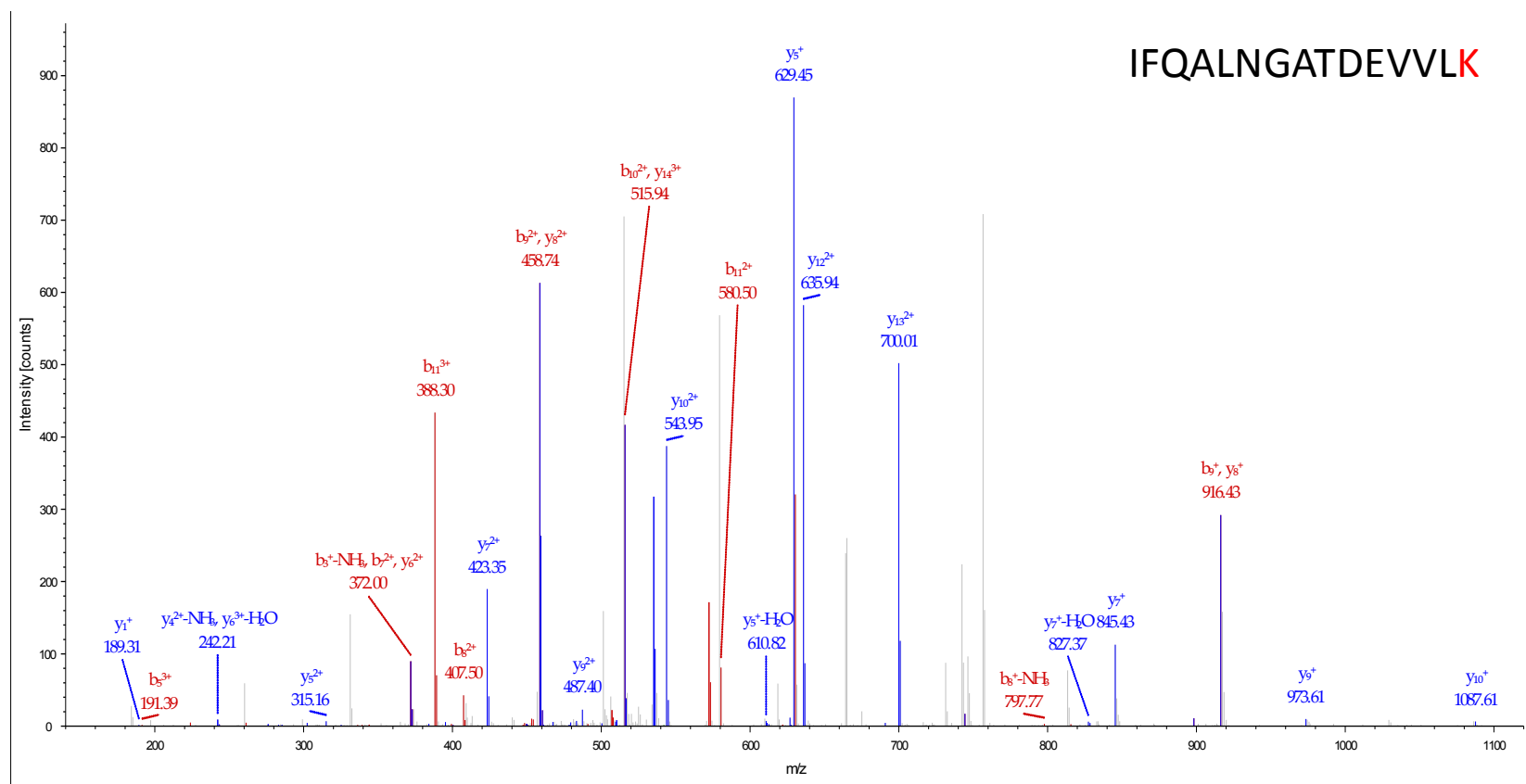
(36)

Figure S1. Cont.



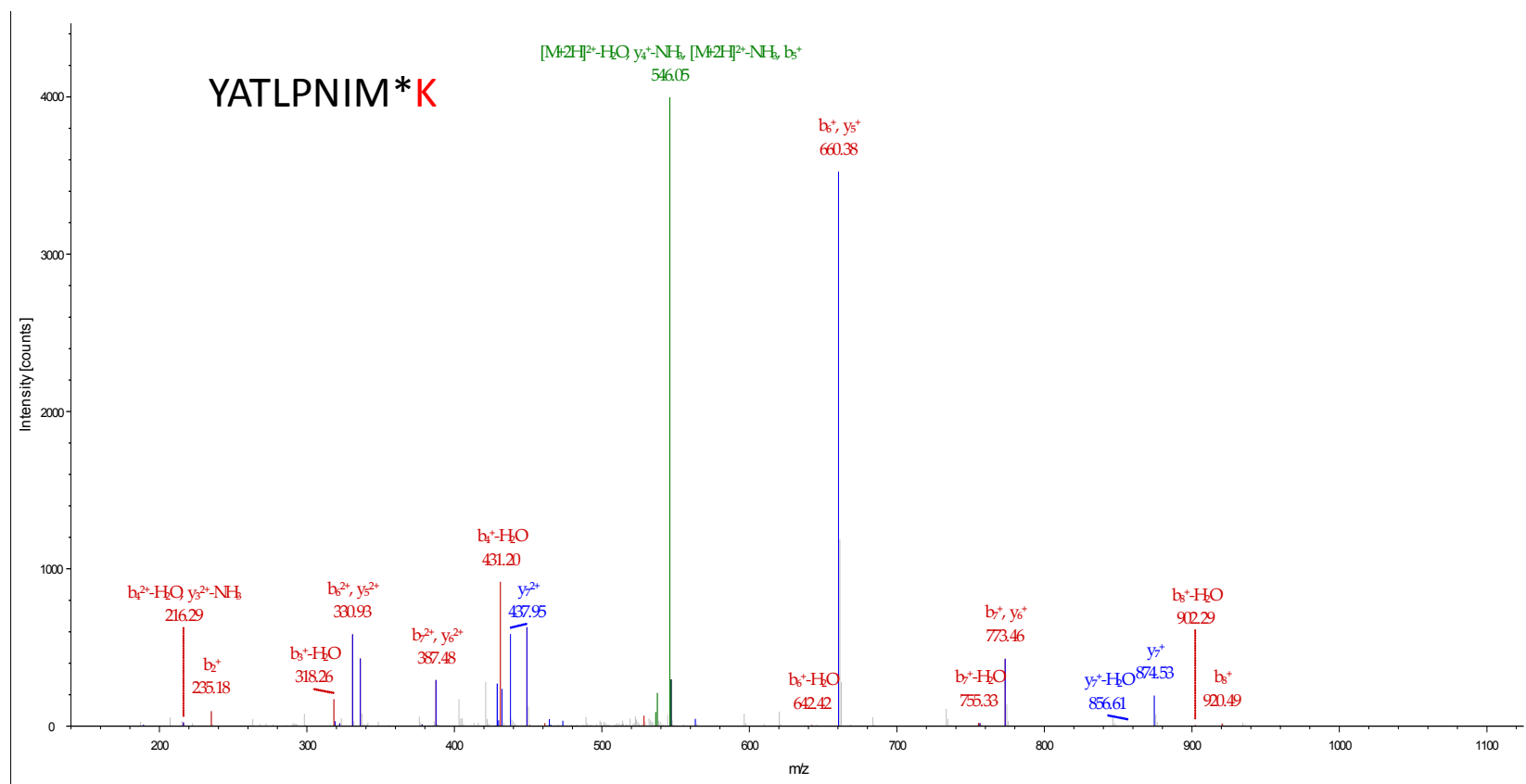
(37)

Figure S1. Cont.



(38)

Figure S1. Cont.



(39)